

**BRITCHAM**  
INDONESIA

2022

# Annual General Meeting Handbook



# WTC

Your World of Opportunity

All buildings in WTC Complex are Green Mark Gold certified.

---

Located in the heart of Jakarta's CBD, with a wide office and retail offering to suit any business needs.

---

Awarded with ISO 45001:2018, marking our commitment in implementing the highest level of health and safety protocols to ensure the well-being of our tenants.

For inquiry: [leasing@jakland.co.id](mailto:leasing@jakland.co.id)



wtc.jakarta



wtcjakarta



wtc.jakarta



jakartaland

Developed and Managed by:

 **Jakarta Land**  
[www.jakland.com](http://www.jakland.com)

## Table of Contents

02	<b>Board of Management</b>	47	<b>Member Focus Groups</b>
05	<b>Annual Partners</b>		Human Capital & Education
06	<b>BritCham Executive Office Team</b>		Climate Change & Environment
07	<b>UK Ambassador's Message</b>		Smart Sustainable Cities
08	<b>Chairman's Message</b>		Professional Women's Group
10	<b>Executive Director's Message</b>	55	<b>Sectoral Working Groups &amp; Position Papers</b>
12	<b>BritCham Highlights</b>		Agriculture, Food and Beverage
15	<b>Financial Report</b>		Automotive
16	<b>Message from Honorary Treasurer</b>		Chemicals
18	<b>Financial Report</b>		Cosmetics
21	<b>BritCham Business Centre</b>		Energy
	About British Business Centre		Finance, Tax and Investment
	Market Access Support		Human Resources
	Events Highlights		Intellectual Property
	Success Stories		Import-Export Procedures
39	<b>BritCham Education Centre</b>		Pharmaceutical and Medical Technology
	About BritCham Education Centre		Property
	Event Listing		Retail
	University Visits		Sustainable Development
	Webinar		Technology
	Education Fair		Tobacco
	Guest Lecture		Transport & Logistics
	Student Testimonials	72	<b>Events Highlights</b>
	University Partners		Event Listing Webinar
			Event Listing: Physical
			Events
		96	<b>Contact Us</b>

Officers

Board Members  
Year of 2022/23



**Chairman**

**Rino Donosepoetro**  
**Standard Chartered Bank**

*Vice Chairman - ASEAN & President Commissioner - Indonesia*



**Christopher Gower**  
**Altium Group Ltd**  
*CEO*



**Dave Campbell**  
**BP Indonesia**  
*VP Operations, Asia Pacific  
of BP Indonesia*



**Vice Chairman**  
**Dimitris Kostianis**  
**PZ Cussons Indonesia**  
*Managing Director*



**Vice Chairman**  
**Gary Selbie**  
**Premier Oil A Harbour  
Energy Company**  
*President Director*



**Ingrid Siburian**  
**Shell Indonesia**  
*President Director  
& Country Chair*



**Ira Noviarti**  
**Unilever Indonesia**  
*President Director*



**Vice Chairwoman**  
**Valentina Chai**  
**Astra International Tbk**  
*Group Treasurer*



**Honorary Secretary**  
**Francois de Maricourt**  
**PT Bank HSBC Indonesia**  
*President Director*



**Ranjana Singh**  
**WPP**  
*Chairwoman*



**Sewhan Chon**  
**AstraZeneca**  
*President Director Indonesia*



**David Butcher**  
**British School Jakarta**  
*Principal*



**Dendy Borman**  
**Diageo Indonesia**  
*Corporate Relations Director*



**Hernoko D. Wibowo**  
**Sudjono & Rekan**  
*Managing Partner*



**Ian Betts**  
**PT. Hill Konsultan Indonesia**  
*President Director*



**Jeffrey Chatellier**  
**Forest Carbon**  
*CEO*



**Lia Alizia**  
**Makarim & Taira S.**  
*Managing Partner*



**Michellina Laksmi Triwardhany**  
**PT Prudential Life Assurance**  
*President Director*



**MT Rajah**  
**Kellys Express**  
*General Manager*



**Terry O'Connor**  
**PT. Matahari Department Store Tbk**  
*CEO*

Consultative Board



**Ainsley Mann**  
**Swire Properties**

*ASEAN Head of Business Development  
Swire Pacific*



**David Burke**  
**Wellington Capital Advisory**

*CEO / Founder*



**Graham Garven**  
**VDB Loi Indonesia**

*Partner*



**Hugh Moffatt**  
**British Council**

*Country Director*



**Harun Reksodiputro**  
**Ginting & Reksodiputro**  
**in Association with Allen & Overy**  
*Partner*



**Jay Singgih**  
**Bumi Laut Group**  
*Group Chairman & CEO*



**Oliver Richards**  
**British Embassy Jakarta**  
*Country Director of DIT Jakarta*



**Tonny Pranatadaja**  
**Protocol One**  
*President Director*



**Olly Riches**  
**Michael Page**  
*President Director  
Indonesia & The Philippines*

Ex-Officio

# Annual Partners

## PATRON



## SUSTAINING



## BUSINESS DEVELOPMENT NETWORK PARTNERS



## TECHNOLOGY PARTNER



## AIRLINE PARTNER



## OTHER



BritCham Executive Office Team



Chris Wren  
*Executive Director*



Daliana Tiono  
*Head of Finance*



Chenny  
*Manager, Education Centre*



Lia Armalia (Cia)  
*Marketing Communications  
Manager*



Shella Djuwardi  
*Manager, Business Centre*



Marni Nursepti  
*Membership Coordinator*



Yunita Leginawati  
*Sales & Marketing Coordinator*



Syarifah Nurjihhan (Jihan)  
*Marketing Communications  
Assistant*



Tasya  
*Finance Assistant*



Dena Rizky Syahira  
*Projects Assistant*



Yulian Maulida Khasanah  
*Executive Assistant*



Alvira Rizki Wulandari  
*Events Assistant*



Irawanti Ayu  
Kusumawandira  
*Research and Project Assistant*



Alvia Putri Cindy  
*Communications Assistant*



Arif Warman  
*Office Assistant*



Tusin  
*Driver*

Our team wishes to thank **Robert Gower** for all his assistance in the production of this year's AGM Handbook.



## Message from UK Ambassador to Indonesia and Timor Leste

# HMA Owen Jenkins CMG



The British Embassy in Jakarta is delighted to continue its collaboration with BritCham Indonesia in 2022. With the world's attention shifting away from the Covid-19 pandemic, this year brings new hope for still stronger collaboration between the UK and Indonesia.

With so many ways to collaborate and so much to celebrate, I look forward to the British Embassy and Britcham Indonesia continuing to work together in bringing positive impact to the UK, Indonesia, and the rest of the world.

**Owen Jenkins CMG**  
*Her Majesty's Ambassador to Indonesia and Timor-Leste*

Indonesia is one of the largest economies in the Asia-Pacific region, and the biggest in ASEAN. Its strength is driven by its growing middle class which keeps increasing in terms of purchasing power. The country has so much potential for firms from the UK – the fifth largest economy in the world – to build their customer base in various sectors including F&B and professional services. The British government has put trade and investment at the heart of the new UK-Indonesia Partnership Roadmap launched in April this year.

2022 is also a remarkable year for Indonesia due to its G20 presidency. The country is committed to focusing on Global Health Architecture, Sustainable Energy Transition, and Digital Transformation; all of these in line with the Embassy's priority sectors. Through our Department for International Trade, the Embassy is also actively supporting B20's digital transformation, women in business, and sustainable infrastructure agendas.

In all these areas I see Britcham Indonesia as one of the Embassy's key partners, providing valuable support and networks to both existing members and to new UK firms looking to enter the market. We also see opportunities for expanding collaboration between government and businesses on G2G projects, for example in transport, digital infrastructure and potentially also on other national strategic projects like the new capital city development. Various types of support, including UKEF, are available to help UK firms finance their ambitions.

## Message from Chairman of BritCham Indonesia

# Rino Donosepoetro



Welcome to the 2022 AGM Handbook for BritCham Indonesia.

My appointment as Chairman comes at a time when we are recovering from the woes of the pandemic. Having been on the BritCham Board throughout the pandemic, we can be proud in saying that we have managed not just to retain our value

during the pandemic and remain committed in supporting our members, but we have also made an active contribution to both the business and general community through our network and activities. Turning to this year, as businesses and economies open, we look forward to the new opportunities which will come once recovery is underway.

Our vision remains to be the leading business membership association to promote and facilitate trade and investment growth between Britain and Indonesia through diverse networks. With the appointment of new Board members, Executive officers and Consultative Board members, I am pleased to say that we have a diverse, well represented, and strong board which will support the Chamber in continuing our main objective.

My predecessors, Olly Riches and Ainsley Mann, have set the foundation and direction on how we retain BritCham's reputation as the most active foreign chamber in Indonesia. This year, the entire strategy and focus will be to continue to build upon the 5 key objectives from the past chairmanship. That being said, in welcoming the post-pandemic world, we will continue to evolve, expand, and adjust our focus on our key objectives:

1. Members first approach - Enhancing value-add and promoting members' interests effectively.

2. Optimising the organisation's ecosystem and creating synergies between board and non-board members, focus groups and committees.
3. Enhancing alignment with Her Majesty's Government and strengthening relationships with key stakeholders to improve advocacy effectiveness.
4. Exploring and optimising our funding opportunities.
5. Intensifying promotion of the BritCham brand.

Our growing Education Centre and an established Business Centre, bridging the UK companies into Indonesian markets, offers plenty of opportunities to be tapped. We believe our holistic solutions will bring added value to Indonesian students, formal education providers and blue-chip employers.

Our organisation is strengthened by the three committees that we have. Our Advocacy Committee has been resilient in weathering the pandemic and has managed a tremendous feat in managing relationships with our key stakeholders, and we will be sure to keep up the momentum this year. Our Communications Committee and Membership Committee are both strong pillars which we will focus on developing. Our 4 focus groups representing major sectors and issues will also continue to evolve to encompass major themes in the UK and in Indonesia.

The Chamber and its members have been a partner to the Indonesian government, actively involved in contributing to the recommendations of the Indonesia-UK Joint Trade Review (JTR) and in various B20 task forces in Indonesia's G20 presidency. With a successful JETCO ministerial meeting in February 2022, the UK and Indonesia are expected to build an even closer bilateral relationship. No doubt the Chamber will play an increasingly strategic role as partners of British businesses as well as the UK

and Indonesian governments, especially in the key sectors focused by JETCO where we are very well represented - namely: education; financial and professional services; renewable and green energy; F&B; and healthcare among others.

Lastly, I would take this opportunity to convey our sincere regards and deep gratitude to our valued stakeholders - Members, Sponsors, Partners, Executive Officers, Board Members - for their continued support and trust, and my heartfelt appreciation to our Executive Director, Chris Wren, and his Executive Office for their outstanding efforts, passion and resilience in delivering results in what continues to be a very volatile environment.

**Rino Donosepoetro**  
*Chairman of BritCham Indonesia*

## Message from BritCham Indonesia Executive Director

# Chris Wren



Dear valued members and all associated with BritCham,

Our new Chairman has referred to challenging times past and turbulent times presently, on his two marvelous predecessors and the Officers' commitment to drive greater value and even more relevance as we move on. I concur

with all his sentiments and aspirations.

A brief rewind... there is no doubt that our fast transition to digital services for our members was highly appreciated. In fact, we quickly learned that the flow of useful information, business intelligence and showcasing of our members' credentials and expertise was an interim winning formula.

In the last five weeks, we have been transitioning back with even greater velocity to our more familiar formula of contact events of all types - our Awards & Triennial Bash, supporting visiting delegations, market access visits, an alumni gathering, university visits, corporate events' management and a joint European Chambers' event. This feels more like BritCham business-as-usual! We do hope that the present and more conducive domestic conditions will prevail and that we will be able to deliver even more by combining our efforts on both the digital and the contact formats.

We have reinvigorated our comms, marketing and membership support with the help of new Board members. Thank you to each of them. We will now be focusing on smarter comms that will better direct you to the opportunities that are most relevant to you.

The delivery of an even stronger membership value proposition is directly contingent upon understanding exactly what you need from your Chamber as we emerge from the pandemic and look forward. With that in mind, please do engage with the team as they encourage your participation in a new Member Satisfaction Survey that will be released soon.

I would like to thank former Chairman Olly Riches who has probably been the most unfortunate BritCham Chairman in our 42 year history, having not presided over a single physical event! I can assure you that although he had little opportunity to be visible, he was indeed very active in his trust and support of me and the team. Our accessibility to his guidance and experience was particularly reassuring during the challenging recent past. My sense is that the restrictions meant that our members were deprived of a unique energy and passion.

And now, we look forward to the added dimension that our first Indonesian Chairman brings. Early evidence suggests that Donny will help our Chamber penetrate a new and different range of stakeholders and networks, which will benefit all.

Best wishes to all of you from all of us within the Executive Office.

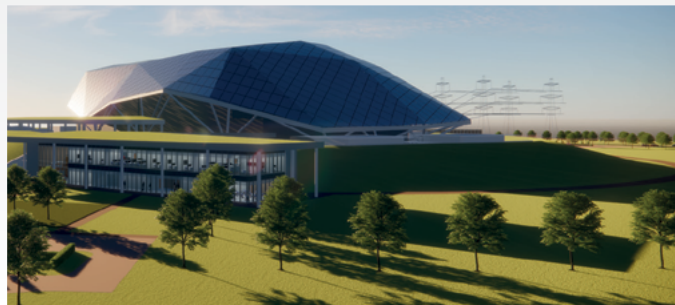
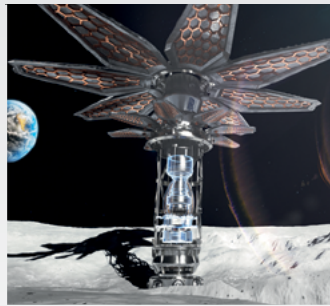
**Chris Wren**  
*BritCham Indonesia Executive Director*



# LEADING THE TRANSITION TO NET ZERO CARBON

Our world is changing. To meet the demands of a growing, more connected society, power must be sustainable.

At Rolls-Royce, we believe in the positive, transforming potential of technology. As a leading power systems provider, we are committed to enabling the sectors in which we operate reach net zero. The breakthrough solutions we are pioneering today will help accelerate the global transition, to create a brighter and greener future for the world.



netzero

[rolls-royce.com](https://www.rolls-royce.com)

BritCham Board Strategy Meeting & Discussion with Mayor of Bogor, Bima Arya Sugiarto  
19<sup>th</sup> June 2022 at Balai Kota Bogor







**THE DNi PROCESS™**

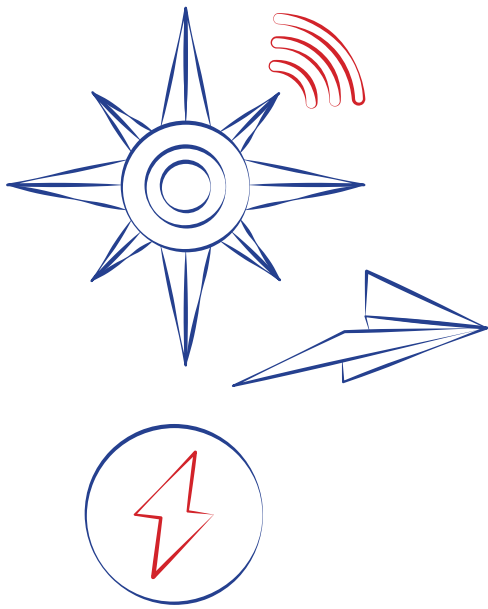
**DELIVERING CLEANER  
METALS TO FUEL  
GREENER MOTORING  
WITH ZERO-WASTE**

[altiliumgroup.com](https://altiliumgroup.com)

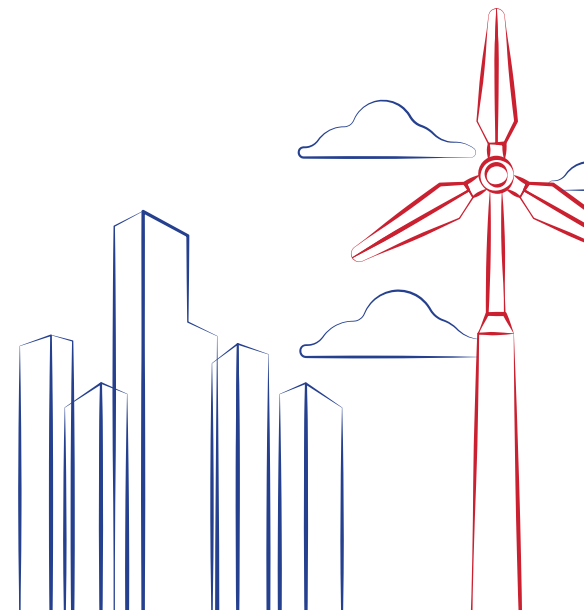
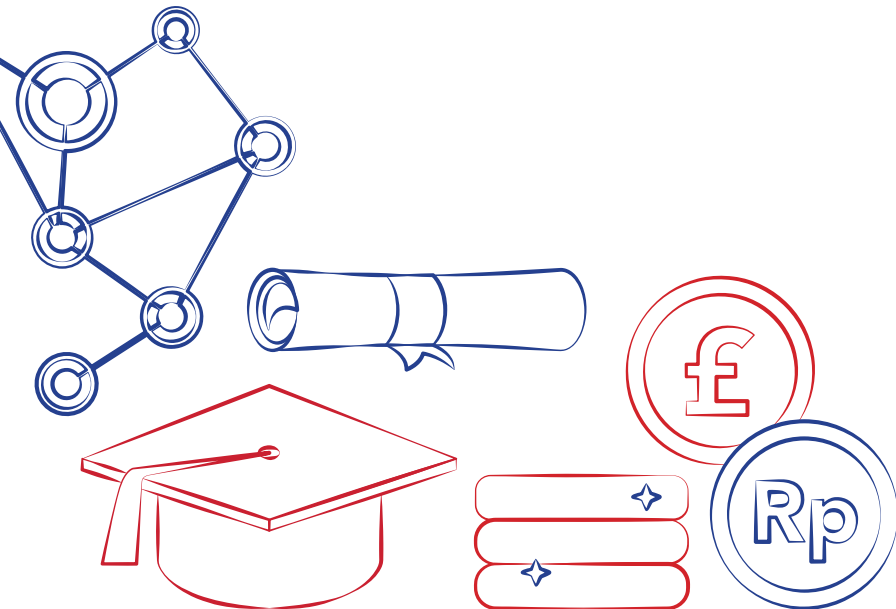
Our ground-breaking, patented technology extracts valuable metals without costing the earth – in fact the DNi Process™ is the only ore processing solution which delivers a positive environmental legacy. Ensuring a constant supply of nickel, cobalt, and more, to power the mass production of EV batteries.

 **Altilium**  
FUELLING THE FUTURE





# Financial Report



## Message from Honorary Treasurer

# Graham Garven



The attached extracts from the audited financial statements of the Chamber are presented to inform Members of the financial position of the Chamber as at the end of 2021.

A copy of the full set of annual audited financial statements will be provided to any member on application to the

Chamber's Executive Director. The following is a summary of the key metrics. A briefer version of the below is presented verbally to the attendees at the AGM.

### ■ Performance Summary

#### **SURPLUS**

In 2021 the Chamber generated a surplus after tax of IDR 67.5 million. This represents an increase of IDR 68 million versus 2020 results, primarily driven by an increase in memberships from Universities - one benefit of our focus on the BritCham Education Centre ("BEC") - and the absence of certain costs which occurred only in 2020, which helped offset the impact of reductions from OBN activity and the costs invested in building the BEC.

#### **REVENUE**

Overall revenues reduced by IDR 83 million, or around 1%, during 2021. The Chamber predominately relies on membership subscriptions, sponsorships and project related income to cover the costs associated with its activities. Ordinarily this is supplemented by events and other income which requires physical presence.

While membership subscriptions increased by 13%, mainly due to Universities coming on board under a special category and sponsorship showing a slight increase, the continued inability to hold in-person events or activities for 2021 led to a reduction of IDR 178 million in revenue from Functions, although obviously the corresponding reduction in the costs of holding functions minimises

the impact of this. More significantly OBN revenues decreased by almost 9% and will cease going forward. Additional revenue streams are being pursued to compensate, with the BEC starting to show some returns in 2021 and new projects managed for members already, at the time of writing, beginning to show returns. In addition, it is hoped that the return of physical events will provide further net surpluses to compensate.

#### **COSTS**

As in previous years, with the tight budgetary constraints the Chamber is required to operate within, cost control remains a key priority; ensuring we optimise the use of our financial resources for the benefit of members whilst remaining within budget and not exposing the Chamber to any significant financial risks.

In 2021 total costs reduced by a further IDR 153 million or 3% versus 2020. These decreases and other changes in costs are largely attributable to similar factors to those affecting revenues but the overall decrease comes despite the BEC cost of IDR 358 million (an increase of 143 million) and an increase in HR expenses. These additional costs represent capacity building and accreditation which should produce returns in future years.

#### **TAXATION**

The 2021 corporate taxation return has been completed, reviewed (including an independent review by an external tax consultant), and submitted within the DGT deadlines.

#### **BALANCE SHEET**

The balance sheet position remains sound following numerous years of good performance and strong financial management. As of 31 December 2021, liquid assets stood at IDR 3.5 billion and net assets were IDR 1.9 billion. Given the continued challenges faced in 2021 and the loss of the OBN grant, the management team is continuing to look for alternative income generation and has determined that it is prudent to continue to retain a reserve sufficient to cover the cost of satisfying any existing HR and other commitments (six-month period). This amount has been revised to IDR 1.8 billion.

**SUMMARY**

Despite the significant challenges which continued to be presented by COVID-19 in 2021, the support of members and sponsors and the prudent stewardship shown by the Executive Office team means that the financial condition of the Chamber continues to remain sound. As in previous years, we will continue to exercise robust control over its finances to ensure resources are optimised and focused on the right areas for the benefit of our members and that we operate in a manner that is financially sustainable.

I would like to express my thanks to the members and sponsors who supported BritCham during 2021 and especially to Chris Wren and the team at the Executive Office who adapted admirably to the challenges presented by the pandemic and kept the overall position sound.

I would also like to thank the immediate past Chairman, Olly Riches, new Chairman Pak Donny and the rest of the Board for the opportunity and their support. Finally, I'd like to mention and send special thanks to Lia, the Head of Finance, and to Chris for their excellent stewardship and governance, and for being available with clear explanations in response to any queries.

Thank you.

**Graham Garven**  
*Honorary Treasurer*

# British Chamber of Commerce In Indonesia

## Statements of Financial Position – Audited 2021

Comparatives are audited positions for years ended December 31, 2020 and 2019

### Assets

<b>Current Assets</b>	<b>Audited 2021 (IDR)</b>	<b>Audited 2020 (IDR)</b>	<b>Audited 2019 (IDR)</b>
Cash and Cash Equivalents	2,793,776,399	2,755,716,239	1,508,940,737
Short Term Investments	767,068,054	509,807,019	1,395,327,805
Receivables - Net	462,388,915	114,102,859	259,224,517
Prepaid Expenses	160,389,955	156,396,623	61,152,926
<b>Total Current Assets</b>	<b>4,183,623,323</b>	<b>3,536,022,740</b>	<b>3,224,645,985</b>
<b>Non Current Assets</b>	<b>Audited 2021 (IDR)</b>	<b>Audited 2020 (IDR)</b>	<b>Audited 2019 (IDR)</b>
Property and Equipment	153,413,146	206,411,489	86,989,949
Deferred Tax Assets	73,970,011	74,841,788	80,564,722
Refundable Deposits	154,126,400	152,376,400	150,284,680
Right-of -Use Assets	616,744,526	1,214,520,196	-
<b>Total Non Current Assets</b>	<b>998,254,083</b>	<b>1,648,179,873</b>	<b>317,839,351</b>
<b>TOTAL ASSETS</b>	<b>5,181,877,406</b>	<b>5,184,202,613</b>	<b>3,542,485,336</b>

### Liabilities and Net Assets

<b>Current Liabilities</b>	<b>Audited 2021 (IDR)</b>	<b>Audited 2020 (IDR)</b>	<b>Audited 2019 (IDR)</b>
Taxes Payable	58,424,040	53,122,767	45,981,203
Accrued Expenses	160,254,696	75,864,722	158,453,880
Unearned Revenues	1,998,255,308	1,524,802,975	825,109,019
Other Payables	203,348,471	243,071,614	506,713,400
<b>Total Current Liabilities</b>	<b>2,420,282,515</b>	<b>1,896,862,078</b>	<b>1,536,257,502</b>

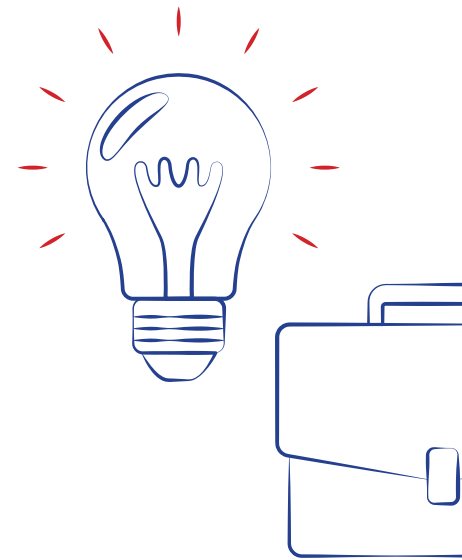
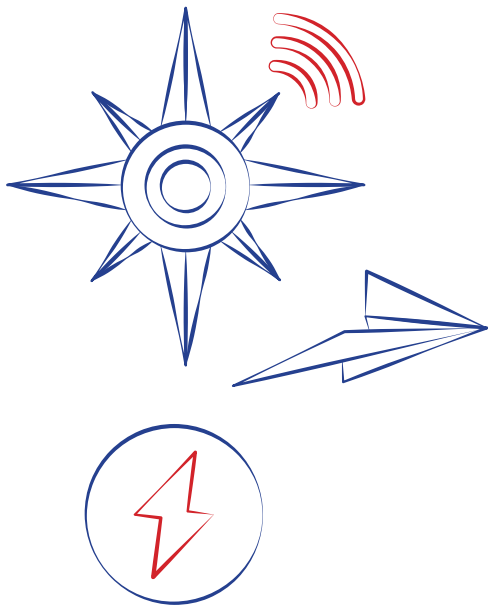
<b>Non Current Liabilities</b>	<b>Audited 2021 (IDR)</b>	<b>Audited 2020 (IDR)</b>	<b>Audited 2019 (IDR)</b>
Lease Liabilities	649,299,787	1,260,878,723	-
Employee Benefit Liabilities	176,987,637	158,691,897	137,734,886
<b>Total Non Current Liabilities</b>	<b>826,287,424</b>	<b>1,419,570,620</b>	<b>137,734,886</b>
<b>Total Liabilities</b>	<b>3,246,569,939</b>	<b>3,316,432,698</b>	<b>1,673,992,388</b>
<b>Net Assets</b>	<b>Audited 2021 (IDR)</b>	<b>Audited 2020 (IDR)</b>	<b>Audited 2019 (IDR)</b>
Unrestricted	1,935,307,467	1,867,769,915	1,868,492,948
<b>Total Net Assets</b>	<b>1,935,307,467</b>	<b>1,867,769,915</b>	<b>1,868,492,948</b>
<b>TOTAL LIABILITIES AND NET ASSETS</b>	<b>5,181,877,406</b>	<b>5,184,202,613</b>	<b>3,542,485,336</b>

## British Chamber of Commerce In Indonesia Statements of Comprehensive Income – Audited 2021

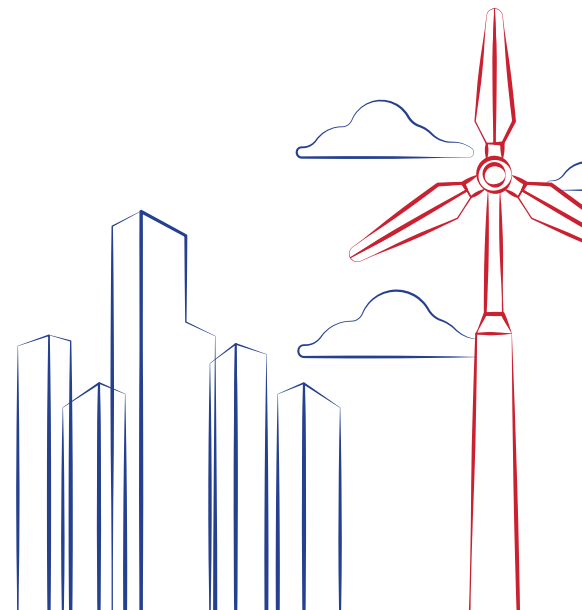
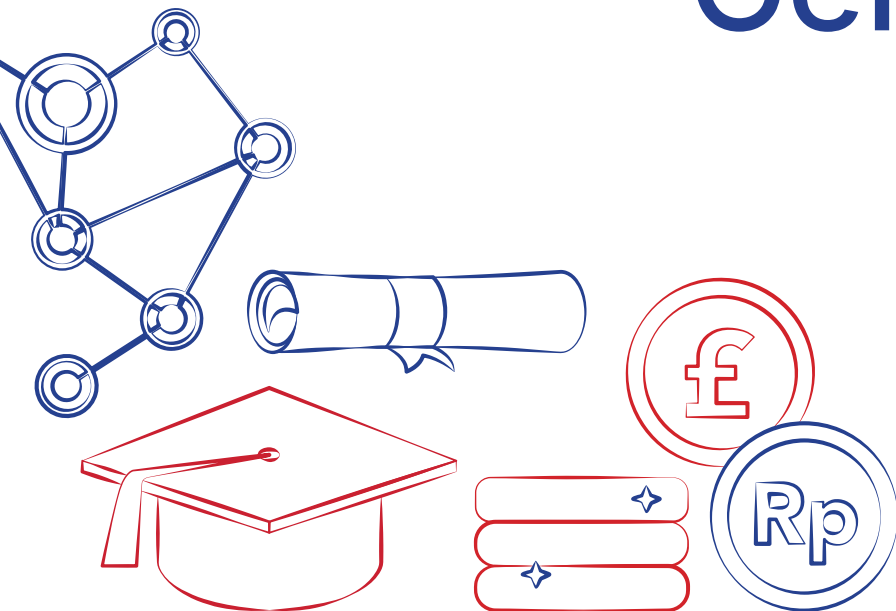
Comparisons are audited results for years ended December 31, 2020 and 2019

<b>Revenues</b>	<b>Audited 2021 (IDR)</b>	<b>Audited 2020 (IDR)</b>	<b>Audited 2019 (IDR)</b>
Membership Subscriptions	2,126,164,212	1,880,769,843	1,714,529,532
Sponsorship	629,466,667	620,316,666	718,672,667
Functions and Meetings	108,333,333	286,302,328	1,861,020,500
Publication and Advertising	398,262,500	415,691,667	128,145,833
Market Facilitation Services	67,141,658	70,679,559	124,526,000
Overseas Business Network (OBN)	2,344,954,008	2,570,487,083	2,572,646,459
BritCham Education Centre	68,400,000	-	-
Others	106,924,570	88,515,548	105,436,444
<b>TOTAL REVENUES</b>	<b>5,849,646,948</b>	<b>5,932,762,694</b>	<b>7,224,977,435</b>

Expenses	Audited 2021 (IDR)	Audited 2020 (IDR)	Audited 2019 (IDR)
Functions and Meetings	31,687,314	175,085,275	1,171,437,887
Publications and Advertising	131,739,216	126,316,612	50,131,698
HR Expenses	3,182,436,625	3,070,965,835	2,911,406,025
Overseas Business Network (OBN)	809,757,831	936,410,900	1,761,200,719
BritCham Education Centre	357,903,410	215,047,596	-
Professional Fees	112,179,677	118,603,143	121,936,675
Administrative and Other Expenses	415,021,134	510,355,209	540,343,143
Depreciation	65,526,344	47,174,403	45,494,428
Depreciation of Right-of-Use Assets - BritCham	345,702,712	360,204,620	-
Depreciation of Right-of-Use Assets - OBN	237,846,317	247,055,477	-
Lease Interest	54,256,812	90,706,147	-
Office Rent	-	-	461,233,923
<b>TOTAL EXPENSES</b>	<b>5,744,057,392</b>	<b>5,897,925,217</b>	<b>7,063,184,498</b>
<b>Surplus Before Income Tax</b>	<b>105,589,557</b>	<b>34,837,477</b>	<b>161,792,937</b>
Income Tax	(38,052,005)	(35,560,510)	(46,763,206)
<b>Surplus (Deficit)</b>	<b>67,537,552</b>	<b>(723,033)</b>	<b>115,029,731</b>
<b>NET ASSETS - BEGINNING</b>	<b>1,867,769,915</b>	<b>1,868,492,948</b>	<b>1,753,463,217</b>
<b>NET ASSETS - ENDING</b>	<b>1,935,307,467</b>	<b>1,867,769,915</b>	<b>1,868,492,948</b>



# **BritCham Business Centre**



## About

# BritCham Business Centre

## For Excellence in Market Access Support



### BritCham Business Centre Team:



**Shella Djuwardi**  
*Manager, Business Centre*



**Irawanti Ayu Kusumawandira**  
*Business Centre Assistant*



**Yuanda Krisna**  
*Research and Project Assistant*

The BritCham Business Centre provides market access support services across all sectors for British SMEs looking to understand the opportunities and to create effective partnerships in Indonesia.

Since its inception in 2013, the BritCham Business Centre team has assisted over 2,500 companies. With accreditation from the British Chamber of Commerce UK in early 2015, the team has provided assured quality services to UK companies in exploring opportunities in Indonesia. This includes over 400 bespoke reports and market visit programmes for UK SMEs. These reports and visits have been the beginning of a journey that has led to export wins for many. The BritCham Business Centre continues to focus on increasing its network with key stakeholders, private and governmental institutions to support UK investment in Indonesia.

The BritCham Business Centre provides an easy landing point for visitors wishing to get straight to work using a hot-desk with all the usual office support facilities. Additionally, our team also offers other services including, but not limited to:

#### MARKET INFORMATION

Understanding a new market can be challenging. Our sector leads specialise in providing market research reports that go far deeper than the desk-top. Tailored reports can include:

- Sector overview
- Regulatory updates
- Market trends
- Competitor and Consumer Intelligence

#### WEBINARS

For British companies interested in hosting or attending webinars, we are able to provide a platform to share and exchange market information with Indonesian companies, regulators and other prominent stakeholders. This can be a cost effective way to test the the market for your product or service.

#### VIRTUAL ROADSHOW MANAGEMENT

For trade groups/associations that would like to participate in trade missions to Indonesia.

#### VIRTUAL TRADE MISSION MANAGEMENT

We are able to facilitate virtual sessions followed by one-on-one meetings with country experts.

#### VISIT PROGRAMME

We are able to introduce British businesses to local stakeholders including private companies, key players, potential partners, potential clients, and regulators, relevant to business' interests.



We are also able to help expand market opportunities through bespoke visit programmes that include one-on-one meetings, during which British businesses and the local stakeholders can discuss mutual interests and make further progress in market access to Indonesia.

### BESPOKE BUSINESS SERVICES

BritCham Business Centre is able to offer tailored services for British businesses. Using these services will significantly increase the likelihood of quick market-entry success.

---

To connect with us for market access support,  
please contact:  
BritCham Business Centre  
[businesscentre@britcham.or.id](mailto:businesscentre@britcham.or.id)

---



## UK Export Finance

### Richard Michael

*Country Head*

UK Export Finance (UKEF) is the UK's official export credit agency (ECA) with the mission of ensuring that no viable UK export of goods or services fails for lack of finance or insurance. UKEF is a sister ministerial department to the Department of International Trade (DIT).

We work closely with DIT colleagues in the British Embassy as well as with BritCham. Indonesia has the honour of being the first location globally outside the UK to have full-time on the ground representation, with the appointment in December 2017 of Richard Michael as Country Head.

This move demonstrates the importance the UK government attaches to the development of stronger trade and investment flows between the UK and Indonesia. The available capacity for Indonesia was increased in 2020 to £4 billion. UKEF can consider support for Indonesian buyers of goods and services, provided at least 20% of the imported content is sourced from the UK. UKEF is also able to offer extended terms of finance in a range of currencies, including Indonesian Rupiah.



## Market Access Support

From June 2021 to April 2022

### ADVANCED ENGINEERING

Guidance Automation Ltd	Guidance Automation Ltd has developed fast route to vehicle automation and guidance capability for OEMs over 30+ years.
McLaren Applied Ltd	Develop and deliver advanced engineering and technology solutions that enable organisations across motorsport, automotive, transport and beyond.

### AEROSPACES

Easat Radar System Ltd	Easat was established in 1987 as a specialist independent company to design and build high-gain antennas.
Open Cosmos	An aerospace company focusing on satellite production and remote sensing service.

### AGRICULTURE, HORTICULTURE AND FISHERIES

PBS international	World leaders in pollination control.
Rosemont Farms	As a leader in fresh product innovation, Rosemont Farms provides world-class value to every aspect of the supply chain.
Omex Agrifluid	Specialising in complex liquid formulations for use in industries, ranging from agriculture to energy.

### AUTOMOTIVE

Castrol	Castrol specialised in Liquid Engineering.
Heritages Parts Centre	A specialist VW and Porsche car parts supplier.

### BUSINESS (AND CONSUMER SERVICES)

Bedfordshire Chamber of Commerce	Membership organisation for Bedfordshire businesses.
Biodiversity Consultancy	Global provider of strategic, technical and policy services for biodiversity management in the private and public sectors.
Blue Link Worldwide	Experts in global business relationships.
BSI (British Standard Institutions)	International Trade and Development.
City of London	The expert advisers regarding everything to see and do in London.
Cornwall Chamber of Commerce	Cornwall Chamber of Commerce inspires, connects and supports all businesses in Cornwall and Scilly.
Data Performance Consultancy Ltd	Smart City specialists advising both local and central government on the development of smart cities for social impact.
Department for Digital, Culture, Media and Sport (DCMS)	They responsible for fast growing, forward-looking, strategically important parts of the economy, sectors.
DNA Business Engineering	Develop clients business strategy, culture & marketing communications to grow your business success, with DNA at clients side.
Glasgow Chamber of Commerce	An independent membership organisation promoting commerce throughout Glasgow and beyond.
Global Business Network BCC	Member British Chambers of Commerce and business groups that are located worldwide and linked to the Chambers of Commerce in U.K region.

GPMS (Global Projects Marine Solution)	A maritime management consultant specialising in offshore construction management.
Greater Manchester Chamber of Commerce	Provides business supports.
Growth Platform	Company that designed to support people and businesses to realise client's potential and generate growth.
Larkspur International	They empower and support organisations to grow.
Linklaters	They provide legal certainty in a changing world.
Mathys & Squire Consulting	Mathys & Squire is one of Europe's most established and renowned specialist Intellectual Property law firms.
Michael Page	Human resources consultant.
MK Retreats	A newly formed company concentrating on running International retreats.
North East England Chambers	Help businesses grow their network, knowledge influence and reach.
Penny Growing	A platform that connects capital to the brightest minds and the fastest growing businesses.
RM Result	IT services and IT consulting.
Scottish Development International (SDI)	Scotland's trade and inward investment agency.
Scottish Qualification Authority (SQA)	They provide products and services in skills, training and education which positively impact individuals, organisations and society.
Sheffield International Trade Centre	Help companies develop their business through the international trade route.
SNR Ink Ltd	They provide efficient logistic services, innovative trade finance tools, global sourcing of materials, and their wealth of market knowledge.
Staffordshire Chamber of Commerce	The leading business support and networking group for Stoke, Stafford & Staffordshire Moorlands.
TMF Group	The leading provider of critical administrative services, helping clients invest and operate safely around the world.
West of England Combine Authority	They supports the Local Enterprise Partnership, which is business-led, and covers the four West of England councils

### CHEMICALS

Brandenburg UK	Manufacture design and manufacture chemical-free pest control equipment.
Halewood Chemicals	A leading supplier of Excipients, API and Chemical Intermediates to the international pharmaceutical industry.
Performance Fluids	A world leading developer for lubricants and greases.

### CLOTHING, FOOTWEAR AND FASHION

Kipperd UK	Experts in and offer fashion sales, marketing and product development as well as consultancy
------------	--

### CONSTRUCTION

Polyseam	Specialise in manufacturing private label high performance fire protection products, adhesives, sealants, fillers and surface finishing products for many well-known global brands.
----------	---

## CREATIVE AND MEDIA

FilmDoo	An exciting new online edutainment platform helping people to learn languages and explore cultures through film.
Morphun	An award-winning construction system with far greater creative, fun value and outstanding educational uses
Second Home Studios	Animation studio.

## EDUCATION AND TRAINING

British Legal Centre	Train newly qualified lawyers in different countries to become International lawyers.
City and Guild	Helping people, organisations and economies develop their skills for growth.
Cormack Consulting	Leading consultancy that supports UK and US universities looking to develop their activity in Central and Eastern Europe.
Doncaster College & University	The largest provider of further education in South Yorkshire.
Doncaster College and University Centre	They are the largest provider of Apprenticeships and Further Education programmes in their region.
Leeds Beckett University	Based in the vibrant city of Leeds, their vision is to be acknowledged for their commitment to student success, innovation and enterprise, global reach, and strong local impact.
Liverpool John More University	One of the largest and most dynamic UK universities.
Meridian English	Teach quality English courses to international students for more than 42 years.
MyLearning	They provide highly intuitive Virtual Learning Environments for education.
NCUK	A consortium of leading UK universities dedicated to giving international students guaranteed access to universities worldwide and helping them succeed when they get there.
NOCN	An educational charity whose core aims are to help learners reach their potential and organisations thrive.
Really English	They provide excellence in English language teaching online. Their modules can be white labelled, enabling partners to re-brand them and embed them into the curriculum.
Royal Northern College of Music	A home to over 900 students from more than 60 countries.
Salford University	A public university in Salford, Greater Manchester, England.
School Development Foundation	They support the expansion of exceptional education around the world.
Sedbergh International School	A school and a community with a common goal: to give the pupils the best holistic education for a fulfilling future.
Solent University	With a population of around 11,000 staff and students, they offers over 200 qualifications ranging from HND to PhD in diverse subjects.
Tellus Group	A vocational and adult education training provider.
Teeside University	Located in Tees Valley, Teeside University is dynamic, energetic and innovative.
Union Education Group	The group work with schools and other organisations in the UK, creating bespoke Education packages and curricula.
University of Suffolk	An agile, responsive university, absorbing the traditions and aligning them with a twenty first century audience.
University of Wolverhampton	A leading modern university with a tradition of providing opportunity and academic excellence dating back nearly 190 years.
Whizz Education	A global education partner accountable to learning outcomes.

## ELECTRONICS AND IT HARDWARE

Vestel Trade Co	A multi-industry manufacturer which operates in electronics, household appliances, mobile technologies, LED lighting and defence.
-----------------	---

## ENERGY

Clarke Energy	They provide distributed power plant solutions with market leading engineering, installation and maintenance support.
Clyde Pneumatic Conveying Ltd	An established company focussing on dense-phase pneumatic conveying solutions for the Energy and Process related industries.
Synergict Smart Energy	Specialist provider of alternative power supply & protection systems.
UEC Energy	An engineering design company focused on the design and development of innovative energy generation technology and Far-UVC solutions.

## ENVIRONMENT

APEM Ltd	Europe's largest specialist aquatic environmental consultancy.
Ministry of Waste	They were on a mission to provide communities with long term, large scale environmental services with zero waste-to-landfill while supplying large volumes of traceable quality material to domestic recyclers.
Water Powered Technologies	The company design and build the 'Papa Pump' as a commercially proven, low cost, environmentally friendly method of delivering water using no fuels or electricity.



## STUDY IN THE UK WITH DE MONTFORT UNIVERSITY LEICESTER

De Montfort University (DMU) is proud to be recognised as a UK university ranked Gold in the Teaching Excellence Framework, offering a range of undergraduate and postgraduate courses from business, engineering, architecture, media, nursing, science and more.

DMU students can gain work experience opportunities through DMU Works employability programme, as well as being located in the welcoming and multicultural city of Leicester, just over an hour from London. Visit our website to find out about international student scholarship opportunities to help with your studies.

[www.dmu.ac.uk/international](http://www.dmu.ac.uk/international)

## FINANCIAL SERVICES (INCLUDING PROFESSIONAL SERVICES)

Crown Agent Bank	UK regulated bank with fintech capabilities.
International Economics Consulting Limited	A multidisciplinary team which delivers specialised strategic advisory services in the field of trade, investment and public policy.
Pomelo Pay	They make payments easy, secure and blazingly fast for merchants, banks and their customers.
PwC	A global network of firms delivering world-class assurance, tax, and consulting services for clients' business.
RSM	They share skills, insight and resources, as well as a client-centric approach that's based on a deep understanding of business.

## FOOD AND DRINK

Bolney Wine Estate	Bolney Wine Estate was established in 1972, producing a wide range of award winning still and sparkling wines from their estate in West Sussex.
British Corner Shop	An online grocery store for British expats around the world.
Coombe Castle	A manufacturer of dairy products, have exported to 35 countries internationally.
Diageo	Global leader in premium drinks, across spirits and beer, a business built on the principles and foundations laid by the giants of the industry.
Jakemans	Specialise in quality menthol based confectionery.
TipTree	Independent British business who grow, make and sell high quality foods.
The Berry Company	As a British drinks company, they supply premium lines of berry juice.



## GIFTWARE, JEWELLERY, AND TABLEWARE

History & Heraldry	History and Heraldry was launched in 1996 and began life as an innovative impulse gifting supplier to UK retail.
Hillcrest Antiques and Shipping	Sell second-hand furniture.
Ramz Den International	Ramsden International exports food from Britain to businesses worldwide.

## HEALTHCARE AND MEDICAL

Air Filtration Solutions	The company design and manufacture air filters to reduce and capture contaminants from the air or air stream.
BetterYou	They was the first company in the world to develop a topically applied magnesium and nutritional oral spray and has been pioneering product development in this area ever since.
GSK	British multinational pharmaceutical company.
L D Collins	UK manufacturer and distributor of Cyclogest, a product which helps in the process of IVF treatment.
Medical Discovery Catapult	They weere works with SMEs, academics, charities, Contract Research Organisations, Pharma, Biotechs, and technology innovators in providing medicines discovery and informatics experience.
Rosemont Pharmaceutical	Their mission is to be a rapid developer, reliable manufacturer and global supplier of novel-delivery, patient-focused medicines.
Rutherford Cancer Centre	The company operate a network of cancer centres throughout the UK, providing all-encompassing cancer services for patients.

## HOUSEHOLD GOODS, FURNITURE, AND FURNISHINGS

Connected Places Catapult	They focus on growing businesses with innovations in mobility services and the built environment that enable new levels of physical, digital and social connectedness.
Province 5	Gaming chair provider.

## ICT

Albeego Limited	Providing digital devices with stable, secure and high throughput internet connectivity whilst on the move or static.
Altcom	Their work encompasses Enterprise Web Platforms, Mobile Apps, UX Design, Digital Marketing, HA Cloud Hosting, SEO and Bespoke Software.
AXELOS Global Practice	AXELOS is dedicated to making professionals through certification and guidance in project management, IT service management and cyber resilience.
Cyber Prism	Provide integrated cyber security solutions in the energy, maritime and private wealth protection sectors.
CyberCyte Ltd	The company is providing a disruptive built-in integrated physical, network and perimeter security solution framework.
CyberQ	Provide cyber security services and consultancy .
Data Performance Consultancy Limited	DPC are experts in Smart City Solutions, Business Intelligence Consulting & Big Data Analytics Services for companies & institutions across the UK
Duco Digital	An award-winning professional digital marketing agency.
Epitomical	A technology company focused on developing Connected & Autonomous Systems (CAS) for the Transport, Future of Mobility and Smart City markets.
Globant India Pvt Ltd	They are a digitally native company that helps organizations reinvent themselves to create a way forward and unleash their potential.
Inmarsat	The company offer an unrivalled portfolio of global satcom solutions and value-added services to keep their customers connected at all times.

ISB Global	ISB Global is an SAP and Outsystems Partner.
Mayden	They design, build and support insightful cloud based systems for healthcare services in the UK and abroad.
MyLearning	They provide highly intuitive Virtual Learning Environments for education.
TechUK	Trade association which brings together people, companies and organisations to realise the positive outcomes of what digital technology can achieve.
VortexIoT	Provide affordable, practical Internet of Things (IoT) solutions.
Wireless Broadband Alliance	Global organization that connects people with the latest Wi-Fi initiatives.

**LEISURE AND TOURISM**

MK Retreats	A reliable travel company which has been operating for 10 years.
-------------	--

**MARINE**

AM Marine Defence Services	They specify, install, maintain and test and inspect lifting equipment, height safety systems , and industrial doors.
Bibby Marine	World leader in owning and operating niche marine assets, focused on serving our clients in line with our core values





**MECHANICAL ELECTRICAL AND PROCESS ENGINEERING**

Albion Alloys	Provide precision tubes manufactured to order for all engineering applications.
Autoflame	Global market leader in combustion management solutions.
DT&G	DT & G Limited manufacture 'Finn' Chocolate Coating and Polishing Technologies.
EICR	Provider of electrical services – electrical, fire and security, and facilities management.
Luxfer Gas Cylinder	They are world's largest manufacturer of high-pressure composite and aluminum cylinders.
T Hackett and Sons	Supply and distribute quality industrial pipe fittings used in the storage and transfer of liquids and gases across a broad spectrum of industries.

**PORTS AND LOGISTICS**

Brunswick	A logistics company based in the port of Liverpool UK.
-----------	--

**RENEWABLE ENERGY**

Dulas	For nearly forty years, Dulas has been a pioneer in renewable energy.
Renewable UK	Trade and membership organisation of UK companies in the renewable sector.

**RETAIL**

Brompton Bicycles	UK's largest bike manufacturer.
LSA International	A luxury glassware company looking for distributors, targeting high end retailers and department stores.
Little Bird Told Me	A team of toy and nursery specialists dedicated to making the world of little people and grown-ups that little bit more special.
EasyTots	Widely renowned by UK parents, influencers and weaning specialists for bringing the concept of baby weaning suction plates to the UK market in 2016.
Creightons (Potter & Moore Innovation)	Produce a wide range of products across many sectors in Health and Beauty.
Whittard of Chelsea	An international retailer of coffee, tea and various items that are used for the consumption of hot drinks.
Oats	The leading global provider of data solutions and expertise to the lubricants industry, delivering value to our customers across retail, commercial and industrial sectors.
Brit Grocer	A consolidator who supplies British F&B to supermarkets in Canada and some Asian markets.

**SOFTWARE AND COMPUTER SERVICES BUSINESS TO BUSINESS (B2B)**

Ambiental RHDHV	A part of Royal HaskoningDHV. They provides advanced tools, data, digital maps and expert advice on flood risk assessment and management.
Datactics	They develop business-user focused data quality & matching technology, making access to clean and usable data within reach of the people who use it.
FNVi	Their main focus is developing web applications that support teams involved in the inspection, testing and maintenance of large installations across a plethora of industries.
Privacy Solved	A multi-disciplinary team of professionals providing data protection, global privacy, and cybersecurity expertise.
Sytel	A privately-owned and funded software development house which develops and supplies its flagship contact center platform Softdial Contact Center™ (SCC) via a network of partners.

## TEXTILES, INTERIOR TEXTILES AND CARPETS

Magna Colors	Manufacture PVC-free water-based inks for screen-printing of textiles.
--------------	--

## WATER

KLT Filtration	KL Technologies is at the forefront of innovation. KL Technologies' subsidiaries are experts in their fields, from breathable membranes to ceramic filters.
----------------	---

Icon Life saver	A microbiological water filter that removes viruses, bacteria, cysts and parasites from water using ultra filtration (UF) technology.
-----------------	---



UNIVERSITY  
*of York*



# ACA FOR EMPLOYER

## YOUR CAREER QUALIFICATION

Thousands of organisations all over the world are choosing the ACA, as it is one of the most highly sought-after and advanced learning and professional development programmes available. It builds trusted business advisors - in fact, 80% of FTSE 100 companies have ICAEW members on their board.

Together with flexible work experience, modular style learning and exams and a globally-connected membership body, why would you choose any other qualification?

[icaew.com/learning-and-development/aca/aca-employers](https://www.icaew.com/learning-and-development/aca/aca-employers)

Contact us: [suci.kurnia@icaew.com](mailto:suci.kurnia@icaew.com)



## Events Highlight

### Virtual Roadshows and Webinars

No.	Event	Date
1	ASEAN Series: Exploring New Export Opportunities in Indonesia in collaboration with tech UK	15 June 2021
2	Looking after Internationals with Liverpool and Sefton Chamber of Commerce	25 June 2021
3	Webinar for Welsh Companies: Explore Export Opportunities in Southeast Asia	30 June 2021
4	Interview with Forbes Indonesia with Green Finance Delegations of Climate Chamber Mission	
5	Green Finance Webinar	19 August 2021
6	NPH presentation series on Indonesia and ASEAN	
	a. Yorkshire and The Humber	2 September 2021
	b. North East ITAs	22 September 2021
	c. North West ITAs	7 October 2021
7	UK-Indonesia Transnational Education Networking Event	21 October 2021
8	Introduction with ITS Techno Park, featuring LJMU and Data Performance Consultancy	8 September 2021
9	Seizing Growth Momentum: Guide to Best Investment Destinations in Indonesia	15 September 2021
10	UK – Indonesia English Partnership Series (Joint Event with DIT Jakarta)	28-30 September 2021
11	Climate Chamber Mission with Glasgow Chamber of Commerce	2-3 November 2021
12	Webinar: Regional Virtual Trade Mission to Malaysia, Thailand and Vietnam for Green Building Solutions	17 November 2021
13	Closer Look at Indonesia's Sustainable Smart Cities and EV Opportunities	18 November 2021
14	BritCham Advocacy in Association with Kiroyan Partners: Post-COP26: What We Know and The Impact on Indonesia	23 November 2021
15	Climate Chamber City Roundtable Webinar: One Earth platform	26 January 2022
16	Digital and IT for Purpose and Value: Everything is about to change with Artificial Intelligence! Featuring Duco Digital, Axelos, Michael Page and BINUS University	25 March 2022

### Virtual Visit Programme

No.	Company Name	Sector
1	Solent University	Education
2	EasyTots	Retail
3	Polyseam	Construction
4	KLT Filtration	Water

5	Union Education Group	Education
6	UEC Energy	Healthcare and Medical
7	Leeds Beckett University	Education
8	University of Suffolk	Education

## Diageo-BritCham Learning for Life

On 17 February 2022, Diageo and BritCham officially launched the Learning for Life hospitality training programme aimed to provide upskilling and reskilling training to boost the recovery of the tourism and hospitality industry post Covid-19.

Learning for Life is a part of Diageo's Society 2030 commitment — the company's 10-year plan for championing inclusion and diversity, creating a more inclusive and sustainable world. Through Learning for Life, Diageo has been proactively supporting the global workforce with skills refinement and job opportunities. It is hoped that the programme will support the 1.5 million strong workforce in the industry. refinement and job opportunities. It is hoped that the programme will support the 1.5 million strong workforce in the industry.

Encouraged and supported by the Minister of Tourism and Creative Economy, Sandiaga Uno, Learning for Life offered opportunities for 200 young adults within the hospitality and service industry to improve their skills, competence, and confidence. The programme will upgrade skills in finance, service and business management, and provide a deeper understanding of the industry in support of their employability. The first programme was delivered in March and April 2022 at the Mandarin Oriental Hotel Jakarta, supported by BritCham's partners: Reallyenglish and NOCN.

Diageo and BritCham have recently agreed an expanded project that will include more cities and offer a broader range of opportunities to around 600 young adults each year.

## ASEAN Education Research

As part of the British Chamber of Commerce in South East Asia's (BiSEA Chambers) commitment to support and strengthen the UK Education proposition across the ASEAN region, BritCham Indonesia extended our reach to all British affiliated companies in Indonesia to support the UK Government's Turing Scheme. This scheme will provide funding for 35,000 students to go on work placements overseas and should also provide numerous opportunities for UK universities to partner with ASEAN institutions and employers.

A survey of those companies was conducted in late February to early March 2022, whilst maintaining the confidentiality of the members in BiSEA Chambers. It is hoped that this research will provide a clearer picture on UK student mobility into ASEAN countries.

## Micro Focus "Race to Transform" Executive Briefing and Formula-E Prix Event

Celebrating Indonesia's first ever Formula-E event — BritCham member Micro Focus joined forces with Jaguar TCS Racing in 2021 as their official technical partner for the Formula E Championship. Having invited stakeholders from government and private sectors to the inaugural Jakarta E-Prix on 4 June 2022, the advancement of data software, EV technology, sports and sustainability were superbly displayed, resulting in a great experience for all in attendance.

## Success Stories

## What You Have Said About Us!



A massive THANK YOU to you and the BritCham team for making mine and Will's visit to Indonesia so successful, and so much fun !! It was a pleasure to meet all our wonderful BritCham colleagues and have the opportunity to work together!

**Emma Heathcote**  
*Head of International*



Thank you so much for sending over this incredibly detailed report. I am so impressed at the level of work and deep research your team has completed here. There are many potential ideal matches for EasyTots and I will spend some time digesting the information provided. Thank you so much for support

**Helen Davies**  
*Managing Director*



From the moment I arrived in Jakarta, the support provided by the BritCham team has been exemplary. My experience has been that, regardless of the advice sought, they have always delivered. Through the guidance provided, combined with introductions to people, businesses and government, BritCham has helped to not only get Altilium established in this market but also to be recognised as a key participant in one of the most important sectors in the Indonesian economy.

I would like to express my thanks to the BritCham team for their advice, effort, efficiency, candour and good humour which continues to smooth both my and the company's path to success.

**Chris Gower**  
*CEO*



Many thanks to the entire BritCham team for enabling us to showcase our brand new tailored service for Leadership Talent Pool managers from any sector, with a pioneering leadership agility in-work development programme for Corporate Universities and Training Academies. In partnership with Prudential (Indonesia), Chris Wren - Executive Director, British Chamber of Commerce (Indonesia) and NOCN, we are delighted to share Prudential's managers' graduation celebration and awarding of the very first triple accredited Certificates in 'Agile Leadership Practice'. Congratulations and thanks to everyone for making this happen.

**Dr. Paul Aitken**  
*Founder of Mastering Leadership Agility UK (Ltd)*



The partnership with BritCham Indonesia team to create a memorable VIP experience for customers was thoroughly enjoyable. With BritCham's great support, the Micro Focus executive session recently held in Jakarta was graced by valued guest speakers from the industry, providing an overview of Indonesia's Zero Trust approach to accelerating the country's digital economy. Thank you so much for the incredible support for a successful event!

**Chua Ying Tze**  
*Head of Marketing, SEA & Korea*

WE  
BACK   
YOU

TO GO FURTHER  
THAN YOU EVER IMAGINED



E: [international@wlv.ac.uk](mailto:international@wlv.ac.uk)  
W: [www.wlv.ac.uk/international](http://www.wlv.ac.uk/international)



# LSPR Institute of Communication & Business

The Leading Graduate School of Communication & Business

**Kampus Merdeka**  
INDONESIA JAYA

## BACHELOR OF ARTS PROGRAMME (S1)

### FACULTY OF COMMUNICATION

- COMMUNICATION
- VISUAL COMMUNICATION DESIGN

### FACULTY OF BUSINESS

- MANAGEMENT
- TOURISM
- BUSINESS SERVICES

### INTERNATIONAL CLASS

- PUBLIC RELATIONS & DIGITAL COMMUNICATION

## BACHELOR OF ARTS E-LEARNING PROGRAMME (S1)

- E-LEARNING IN COMMUNICATION

## POSTGRADUATE PROGRAMME (S2)

- MASTER OF ARTS IN COMMUNICATION



lspredu

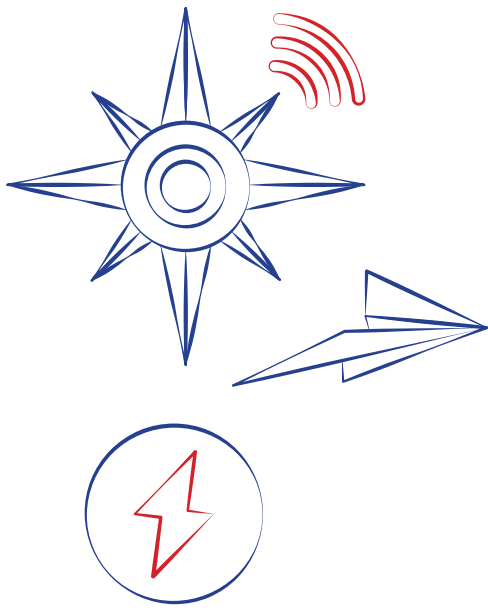
☎ 021 251 2277 (JAKARTA) / 021 8269 1718

(BEKASI)

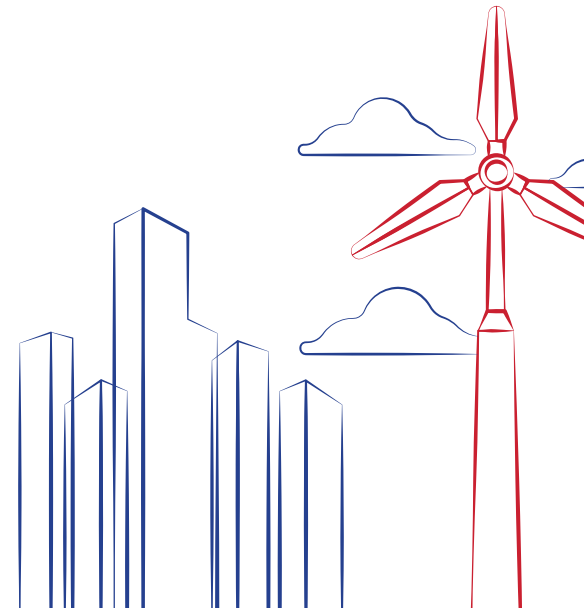
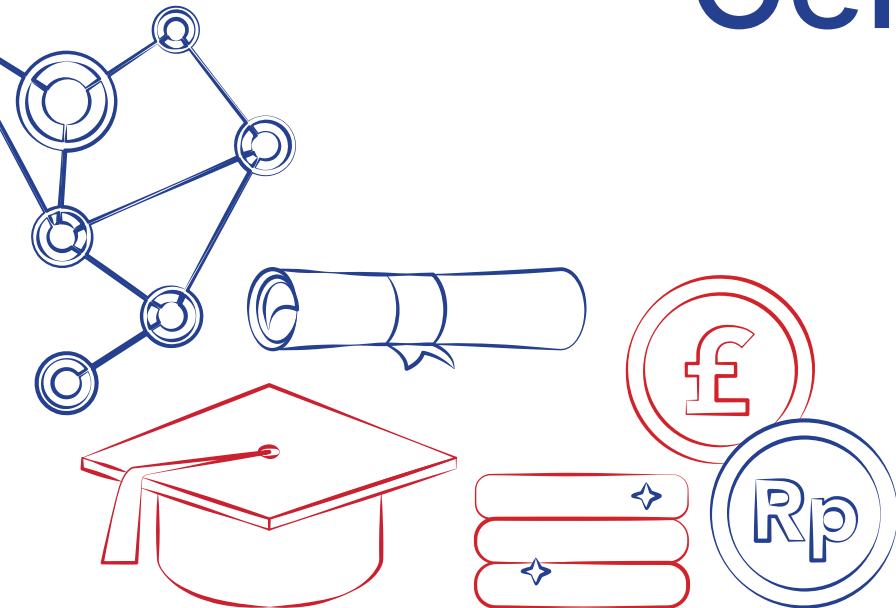
☎ 0817 1717 1992

📷 @JoinLSPR





# BritCham Education Centre



## About

---

# BritCham Education Centre



## BritCham Education Centre Team:



**Chenny**  
*Manager, Education Centre*



**Dena Rizky Syahira**  
*Projects Assistant*

For more than 40 years, BritCham Indonesia has been facilitating trade and investment between Indonesia and the UK. The Chamber's innovative support to its members and the community is evidenced by the establishment of the BritCham Education Centre at the beginning of 2020. This unit is aided by the results from the Business Confidence Index (BCI) which BritCham have been producing for the past 8 years. Those results suggest the acquisition, development and retention of top graduating talent are a major challenge to achieving commercial potential.

The BritCham Education Centre focuses on both education and human resource development, particularly executive development and leadership skills. This holistic approach aims to connect Indonesian nationals with internships, mentor buddies and formal education providers in the UK, and blue-chip employers seeking the best returning talent. The BritCham Education Centre has accumulated a panel of British universities with employability ratings that cover subject areas aligned with national goals and talent gaps to ensure successful connections with international employers and top Indonesian talent.

Since its inception, the BritCham Education Centre has conducted more than 65 informative sessions with UK university partners, top national and international high schools, as well as universities in Jakarta, Bali, Medan and Surabaya.

The BritCham Education Centre has also launched its first "BritCham Scholarship Award" to fund the studies of an Indonesian student in the UK at a Master's degree level. This initiative is aimed specifically at Indonesian students and/or alumni from the local universities that have been working together with BritCham Indonesia.

---

*To connect with the BritCham Education Centre, please contact:*  
**educentre@britcham.or.id**

---

## Event Listing

### School Visits

No.	Event	School	Date
1	University Preparation	BINUS School Simprug	13 July 2021
2	Essential Guide for Future UK University Applicants	Gandhi Memorial International School Bali	07 August 2021
3	How to Make a Successful Application to the Top Russell Group Universities with University of York	BINUS School Simprug	13 August 2021
4	Unlocking Your Future Career in Business with University of the West of England, Bristol	Gandhi Memorial International School Bali	14 August 2021
5	Enhance Your English Writing Proficiency Skills with University of the West of England, Bristol	SMAN 70 Jakarta	01 September 2021
6	Get Into a Russell Group University: Personal Statement A to Z with University of Exeter	BINUS School Simprug	17 September 2021
7	The Complete Manual to Prep Your Study Abroad: UK University Edition	North Jakarta Intercultural School	22 September 2021
8	Road to UK University Admission: Tips, Tricks and Key Information for 2022 Intake	Sekolah Ciputra Surabaya	27 September 2021
9	Introducing: University of York	Sekolah Ciputra Surabaya	29 September 2021
10	English Test Preparation Session with University of the West of England, Bristol	SMA Unggul Del	02 October 2021
11	Breaking Into Technology Industry with Computer Science Degree at University of Wolverhampton	SMAN 70 Jakarta	13 October 2021
12	Get Into the Top Environmental Courses in the World with University of Exeter	SMAN 70 Jakarta	15 October 2021
13	Work-Ready, World Ready, and Future Ready with Solent University, Southampton	Sekolah Pelita Harapan	19 October 2021
14	Essential Information for Entry to Top Russell Group Members with University of York	Sekolah Pelita Harapan	21 October 2021
15	Introducing: Teesside University	Sekolah Pelita Harapan	26 October 2021
16	In-depth Workshop for Writing an Exceptional Personal Statement with University of Suffolk	SMAN 70 Jakarta	27 October 2021
17	Up Close and Personal with a Member of the Russell Group Universities: University of Exeter	Sekolah Pelita Harapan	28 October 2021
18	#StudyinUK - Dream It and (How to) Get It!	Springfield High School	21 April 2022
19	How to Write an Excellent Personal Statement for Your UK University Application with Leeds Beckett University	SMA Unggul Del	22 April 2022

## University Visits

No.	Event	School	Date
1	Excel Your Academic and Professional Skills at UK Universities	Universitas Airlangga	14 July 2021
2	Get to Know Mass Communication, Broadcasting, and MBA course at De Montfort University	London School of Public Relations	22 July 2021
3	See Yourself Apart in Tourism Industry with Leeds Beckett University	London School of Public Relations	23 July 2021
4	Personal Statement 101: The Do's, The Don'ts and The How's with Leeds Beckett University	President University	18 August 2021
5	Getting Art into Games & Animation with Teesside University	Institut Teknologi Del	24 August 2021
6	Broaden Your Global Perspective with an International Relations Degree at University of York	Universitas Airlangga	27 August 2021
7	Accelerate Your Career in Accounting and Financial Industry with University of Exeter	Universitas Airlangga	02 September 2021
8	How to Write an Outstanding Personal Statement for University Applications with University of Wolverhampton	Institut Teknologi Del	03 September 2021
9	Stand Out Through Your Personal Statement with Liverpool John Moores University	Universitas Airlangga	09 September 2021



# GROWING OUR GLOBAL COMMUNITY

An adventure in life and learning begins  
at the University of Portsmouth.

Find out more

E: [global@port.ac.uk](mailto:global@port.ac.uk)

W: [port.ac.uk](http://port.ac.uk)

**5★**  
UNIVERSITY  
QS TOP UNIVERSITIES 2022

**9/10**  
GRADUATES IN WORK  
AND/OR FURTHER STUDY  
HESA GRADUATE  
OUTCOMES SURVEY 2018/19

**77%**  
OF OUR RESEARCH IMPACT  
RATED AS WORLD-LEADING OR  
INTERNATIONALLY EXCELLENT  
REF. 2021



No.	Event	School	Date
10	How to Prep Yourself for an Interview Session with University of Suffolk	President University	15 September 2021
11	Gear Up for Digital Creative Industry with Design and Animation Courses at Teesside University	Institut Teknologi Bandung	04 October 2021
12	Build the Future through Sustainable Architecture with Solent University, Southampton	Institut Teknologi Bandung	05 October 2021
13	Level Up Your English Writing Skills For an Excellent Personal Statement with University of Wolverhampton	Institut Teknologi Bandung	06 October 2021
14	An Introduction to One of the Best Young Universities in the World: Liverpool John Moores University	Institut Teknologi Bandung	07 October 2021
15	Food Science & Technology for the Future with Teesside University	Universitas Prasetya Mulya	08 November 2021
16	Scholarships: Women in STEM from Liverpool John Moores University	Institut Teknologi Bandung	23 February 2022
17	Scholarships: Women in STEM from Teesside University	Institut Teknologi Bandung	24 February 2022
18	Scholarships: Women in STEM from Liverpool John Moores University and Teesside University	Universitas Prasetya Mulya	04 March 2022
19	#RoadtoISMA2022 Informative Session with University of York	Universitas Airlangga	31 March 2022
20	#RoadtoStudyUK - Study in the UK 101: All Things You Need to Know	Universitas Diponegoro	13 May 2022
21	#RoadtoStudyUK - Seizing Your Future Opportunities with STEM Degree at University of Wolverhampton	Institut Teknologi Del	24 May 2022
22	#RoadtoStudyUK - Study in the UK: The Why's and The How's	Maranatha Christian University	25 May 2022

## Webinars

No.	Event	Date
1	BINUS Festival - Virtual University International Seminars: Society 5.0 Redefined with University of Suffolk	09 December 2021
2	Universitas Kristen Indonesia - International Organisation Talks: Their Praxis in The Dynamic of Asia Pacific Region	16 December 2021
3	Universitas Padjajaran - Study Abroad 2021: Paving Your Path for Overseas Study	17 December 2021
4	Teesside University - Prestigious Scholarships & Awards Webinar	09 February 2022
5	Sampoerna Academy EduFest 2022 - Study in the UK: What to Prepare and What to Expect as International Students	12 February 2022
6	#RoadtoLPDP2022 - One Step Closer to University of Exeter and Lancaster University	23 March 2022
7	#RoadtoGREATScholarships2022 - One Step Closer to University of Wolverhampton	07 April 2022
8	Pradita University & Universitas Kristen Krida Wacana - Forum on FurtherStudies Abroad	13 April 2022

## Education Fairs

No.	Event	School	Date
1	Virtual University Fair	Bina Tunas Bangsa School	09 and 16 October 2021
2	University and Career Day	Tzu Chi Secondary School	23 October 2021
3	EduFest 2022 - Virtual Exhibition & Education Fair	Sampoerna Academy	11 to 13 February 2022

## Guest Lecture

No.	Event	UK University	Local University	Date
1	Critically Assessing the Potential for the Internet to Foster a Public Sphere	Liverpool John Moores University	Universitas Airlangga	03 December 2021

## Student Testimonials



### Jade Megan Supple

University of the West of England (UWE) Bristol - BA (Hons) - Business Management and Marketing

Thanks to the BritCham Education Centre team for assisting me to secure a place at UWE Bristol. The level of information and their support to me was top notch! The team was encouraging, super helpful and they patiently guided me since the beginning of the process - they made sure I didn't miss any deadlines or details and kept me informed on the development of my application to the University. I am very glad that I contacted BritCham because now I am living the best life as an international student here in Bristol! I have recommended their support to my family members and friends who are planning to study in the UK and will keep continuing to do so. Once again, thank you BritCham!



### Nicholas Parsintaan Pasaribu

University of the West of England (UWE) Bristol - Master International Trade and Economic Law

The BritCham Education Centre has provided me with numerous benefits and they made it easier for me to prepare for and ultimately obtain admission to the university of my choice in the United Kingdom. They guided me through every step of the process, from the file administration to the day of my departure to the UK. What makes me extremely satisfied and amazed is that I was directly supervised by Ms. Arin and Ms. Chenny. They are super friendly, experienced and professional. They provided me with a wealth of important information about higher education in the UK. I was also introduced to UK universities affiliated with BritCham and they assisted me in applying for a scholarship, which I eventually obtained! This could happen because they were very cooperative and informative to me. Many thanks to BritCham, especially to Ms. Chenny, who spent a great deal of time mentoring and educating me on different aspects of coping with concerns and preparations.

### University Partners

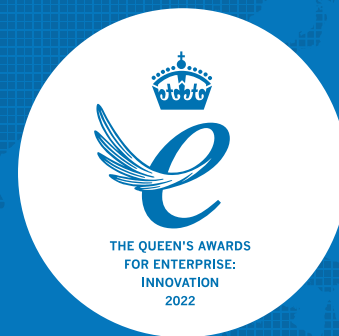


The 2022 Queen's Award for Enterprise in the Innovation category, goes to...

# THE AUTOFLAME EXHAUST GAS ANALYSER



- Drive your company sustainability agenda – support global targets
- Helps to reduce your company's emissions carbon footprint
- Provides continuous emissions monitoring – storing of emissions data up to 3 years
- Monitor O<sub>2</sub>, CO<sub>2</sub>, CO, NO, NO<sub>2</sub> and SO<sub>2</sub> composition
- Designed and manufactured in Great Britain
- Recognised by H.M. The Queen and her Enterprise awards
- 50 years experience & expertise
- 20,000+ installations worldwide with local support and service

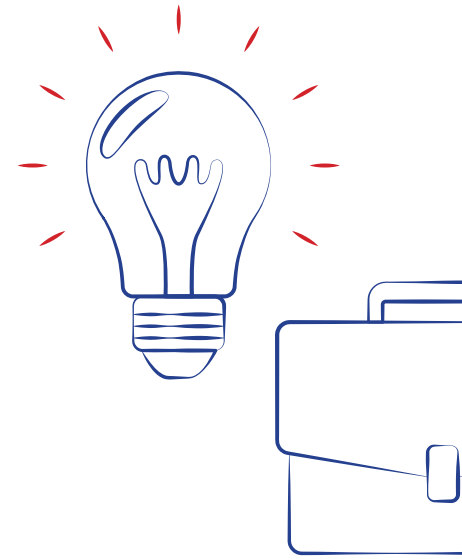
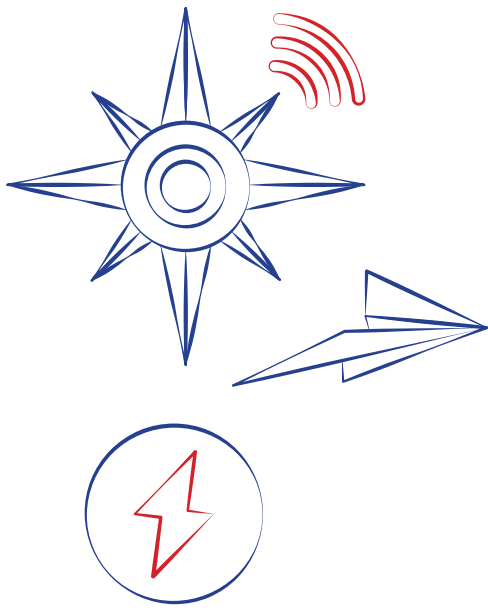


For more information, please visit  
[www.autoflame.com](http://www.autoflame.com)  
+44 (0)1959 578 820  
[salesinfo@autoflame.com](mailto:salesinfo@autoflame.com)

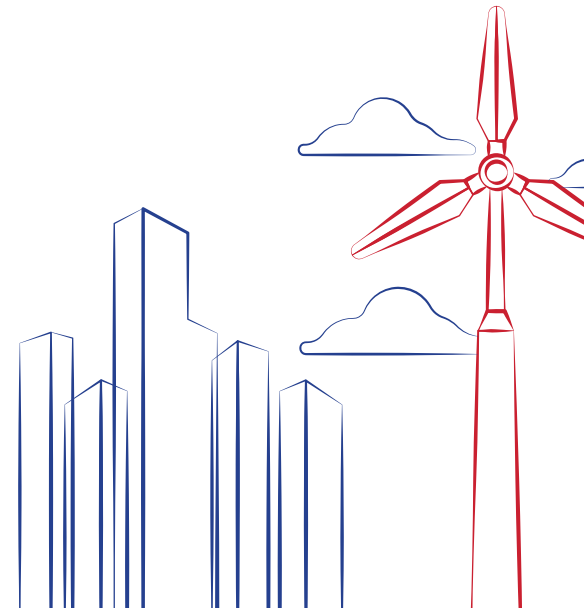
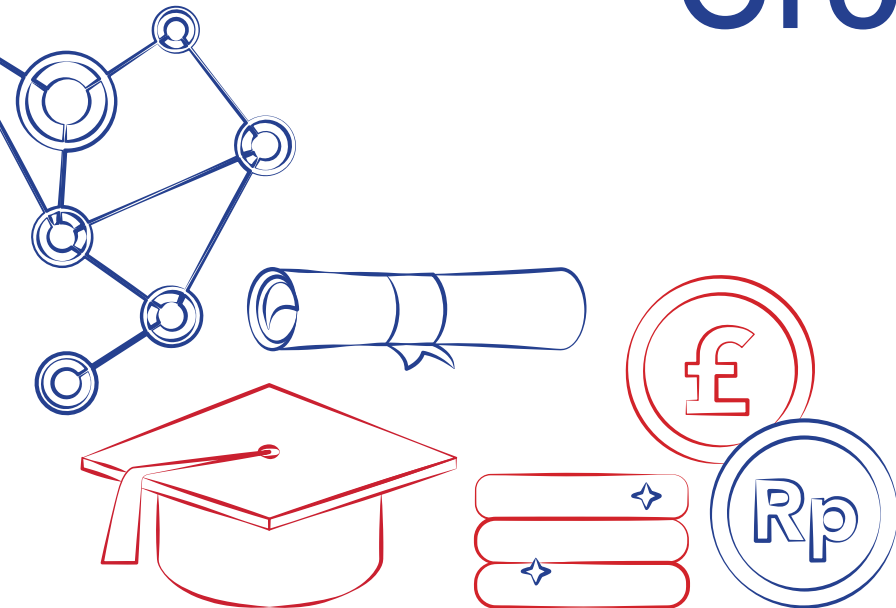
**AUTOFLAME**







# Member Focus Groups



# Human Capital & Education Member Focus Group



**Chairman: Dr Paul Aitken – Founder of Mastering Leadership Agility UK (Ltd)**

To add value for members, BritCham Focus Groups are designed to address contemporary and future focussed issues that have immediate appeal and utility for different sectors. The Human Capital and Education Group (HC&E) was established, noting its increasing importance for guiding learning connected to the implementation of business, community and environmental sustainability. Based on the BritCham Business Confidence Index results, the acquisition, development and retention of leadership, professional and technical talent is cited as a major challenge to realising business potential alongside Indonesia nation building.

As Indonesia seeks to leverage its developing global potential, multiple opportunities prevail for managerial and employee Continuing Professional Development. The recent emergence of online learning delivery enhances these opportunities for British service providers. This group will therefore make a vital contribution to simultaneously building Indonesian and UK enterprises. The HC&E Member Focus Group works closely with the BritCham Education Centre in achieving this objective.

More engagement with UK alumni, relevant employer associations and educational institutions are planned, including partnerships with companies and government organisations in Indonesia for internships and the employment of returning Indonesian talent from the UK. In collaboration with NOCN, we will also seek to endorse and provide accreditation for apprenticeship and qualification programmes, whose curriculum design and delivery will be provided by members.

The Group will also provide thought leadership to boards, senior leadership teams and human resources practitioners in our wider membership, together with policy development at national level, particularly through sustainability leadership training and ESG (Environmental, Social & Governance) advocacy.

This group is strictly for members only.



# Climate Change & Environment Member Focus Group



**Chairman: Jeffrey L. Chatellier – CEO of Forest Carbon**

The year 2021 was significant in terms of the world's interest in tackling climate change. It culminated with the UN Climate Change Conference (COP 26) in Glasgow which became an inflection point for governments and the private sector to make ambitious climate mitigation commitments.

At the governmental level, countries have submitted their National Determined Contributions (NDC). For the private sector, global corporations across sectors have made net-zero commitments to reduce and offset their CO2 emissions.

To signal Indonesia's commitment to climate mitigation to the world, the Indonesian government announced a new Presidential Decree on "Carbon Economic Value" in November 2021 in conjunction with COP 26. This framework presidential decree outlines that carbon emissions in Indonesia will be regulated across all sectors and that there could be different policies and approaches to different sectors including carbon taxation and/or cap and trade schemes. The new regulation also outlines legal structures around carbon credit production and carbon trading. While the new presidential decree gives visibility on the direction of future policy, the detailed implementing regulations have not been released at the relevant ministerial levels. It will be critical for the membership to stay abreast of these new regulations.

To meet the demand for clean energy and carbon offsets, the renewable energy and forest restoration and conservation sectors have been expanding and attracting significant investment in Indonesia. Businesses will need to stay updated on these new green economy sectors as they seek to realise their net-zero commitments.

As the private sector begins to act on climate change, it means businesses are starting new activities and need support from a new

generation of sustainability and environmental professionals that can help them navigate this changing landscape. Recruiting and retaining these professionals will be important as climate change is integrated into all businesses.

The remit of the group is to engage on climate change issues that appeal to a wide constituency of the membership and focuses on four core areas:

- Carbon Taxation and Green Finance
- Renewable Energy
- Natural Climate Solutions (Forest Restoration and Conservation)
- Human Capital Development for Sustainability Professionals

To support the membership, the group works on the following:

- Climate change related advocacy with Indonesian stakeholders including but not limited to Government and Indonesian business associations such as KADIN.
- Enhancing corporate climate change awareness by bringing best in practice climate change and sustainability practices adopted by leading multi nationals to the attention of our membership.
- Building awareness of both UK technologies and UK financing support that can add value to Indonesia's climate change targets whilst at the same time opening up more commercial opportunities for UK business.

The Focus Group is open to all member's participation, and we actively seek member's suggestions as to how we can improve both the content delivered and the wider activities.



# BRISTOL THE CITY OF OPPORTUNITIES



✿ **Top 6 for student satisfaction**

*Sunday Times Good University Guide*

✿ **Best place to live in the UK**

*Sources: The Sunday Times 2020*

✿ **Top 20 in the UK for Graduate Employment Prospects**

*National Student Survey 2020*

✿ **UWE Bristol ranked 36th out of 120UK Institutions**

*Sources: Guardian League Table 2022*



# Smart Sustainable Cities Member Focus Group



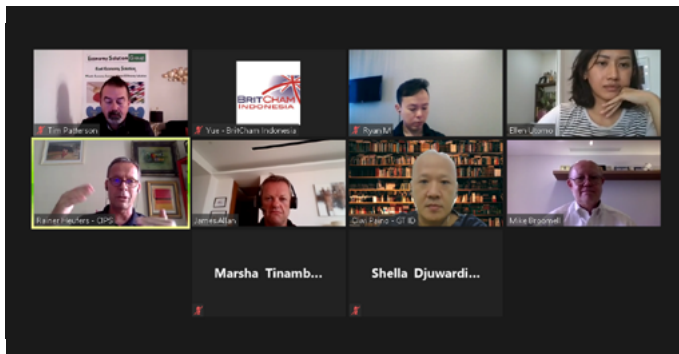
**Chairwoman: Ellen Utomo - Business Development Manager – Swire Properties**

Taking into account the huge interest in Indonesia’s stated intention to move its capital city to Kalimantan, this group is well placed to keep UK and domestically-based members informed of opportunities across central and local governments, as well as within the private sector supply needs.

The Smart Sustainable Cities Member Focus Group aims to generate more relevant and useful events focusing on Indonesian cities’ development strategies and interests. This group helps members generate contacts through the introduction of their services in webinar and networking events or by direct introduction. The group also aims to strengthen its network with cities’ leaders through collaboration with organisations such as APEKSI (Mayor Association in Indonesia).

In 2021, the group focused on a range of topics including urban mobility, city food supply and technology, as well as technology and city recovery from the pandemic. The Group champions best practice for city management, innovation for sustainable city development, and empowers synergy between private sectors and the local government.

This group is strictly for members only.



# Professional Women's Group



**Chairwoman: Sony Jethnani - CEO/Founder of Sony Jethnani Consulting**

The British Chamber of Commerce in Indonesia has been representing a diverse international business community for over four decades. We are proud of our mission to facilitate trade and investment between Indonesia and the UK. We are also equally proud of our reputation of being the most active and innovative foreign Chamber in Indonesia. BritCham Professional Women's Group (BPWG) is a sector group established ten years ago under BritCham.

## VISION

Our USP is that we are the first women-only group with European chambers. BPWG's vision is to elevate and connect women in business. Through our monthly meetings and webinars, we encourage and help women develop new business connections, learn new skills and improve their career; advocate fairness and equality for women; attract new BritCham members; and encourage more engagement amongst BPWG and other women's communities.

BPWG has diverse members both local and expatriates and the events are well attended. We aim to showcase leaders and speakers who are making a difference through the work that they do and the organisations they represent. The ability to think BIG is what makes women's communities so powerful. In order to inspire others and make this world a better reflection of our visions and values, we first need to be inspired.

## BPWG COMMITTEE JULY 2022 - JUNE 2023:

- **Chairwoman:** Sony Jethnani (PT Hansika Unggul Indah, Marketing Director)
- **Vice Chairwomen:** Valentina Chai (Astra International, Group Treasure)
- **Board Members:** Ranjana Singh (WPP, Country Head); Mariko Yoshihara (Ango Ventures, Founder/Startup Investor)

## MENTORING PROGRAMME

In 2021, BPWG collaborated with Shell Indonesia's women's community and jointly created and organised a mentoring programme for Shell Indonesia female employees. Five BritCham women board members supported the programme and committed their time to mentor the participants over a period of 3 months. This initial programme was a success with favourable feedback from all participants. The next step is to create and organise a similar mentoring program specifically for BritCham members (corporates/SMEs/start-ups).

## B20 & BRITCHAM INDONESIA

In cooperation with WIBAC & Unilever Indonesia, BPWG has been invited to create and extend a programme/campaign to encourage and involve the participation of British companies & BritCham members for B20 Indonesia Women in Business Action Council (WIBAC).

BritCham Professional Women's Group  
Annual Partners



**BRITCHAM PROFESSIONAL WOMEN'S GROUP WEBINAR**  
**HOW TO BUILD YOUR NETWORK WITH PURPOSE**  
 Thu, 30 August 21 | 4 PM (DKT) / 10 AM (UK)

THIS WEBINAR IS PROUDLY SUPPORTED BY  
 BRITCHAM PROFESSIONAL WOMEN'S GROUP ANNUAL PARTNERS: OTHER SUPPORTING PARTNER:

FIFTY SEVEN SQR'S U ICAEW

Watch it Here: [bit.ly/BritChamPastEvents](https://bit.ly/BritChamPastEvents)

Facebook: BritCham Indonesia, Instagram: britcham\_id, LinkedIn: BritCham Indonesia, Twitter: britchamworld, YouTube: BritCham Indonesia

**BRITCHAM PROFESSIONAL WOMEN'S GROUP WEBINAR**  
**Future of Healthcare**

Open to All Members and Friends, Ladies and Gents

Tuesday, 22 February 2022  
 4:00 PM (DKT) / 09:00 AM (UK)

**Jonathan Sudharta**  
 Co-founder and CEO of Helodoc

**Varun Khanna**  
 Senior Director Healthcare Business and Investments of Siloam Hospitals

**Windswati Tjahjedi**  
 Chief Executive Officer of PT ASURANSI JIWA ASTRA (Astra Life)

About Professional Women's Group  
 BritCham Professional Women's Group (BPWG) is a sector group established eleven years ago, exclusively for member approaches and their employees. The group focus is to elevate and connect women in business.

Scan to register or go to this link: [bit.ly/BritChamPWG-22Feb22](https://bit.ly/BritChamPWG-22Feb22)

Facebook: BritCham Indonesia, Instagram: britcham\_id, LinkedIn: BritCham Indonesia, Twitter: britchamworld, YouTube: BritCham Indonesia

**BRITCHAM PROFESSIONAL WOMEN'S GROUP INTERNATIONAL WOMEN'S DAY WEBINAR**  
**Economic Recovery Post Covid-19 through Inclusivity and Equality**

Thursday, 17 March 2022  
 4:00 PM (DKT) / 09:00 AM (UK)

Facebook: BritCham Indonesia, Instagram: britcham\_id, LinkedIn: BritCham Indonesia, Twitter: britchamworld, YouTube: BritCham Indonesia

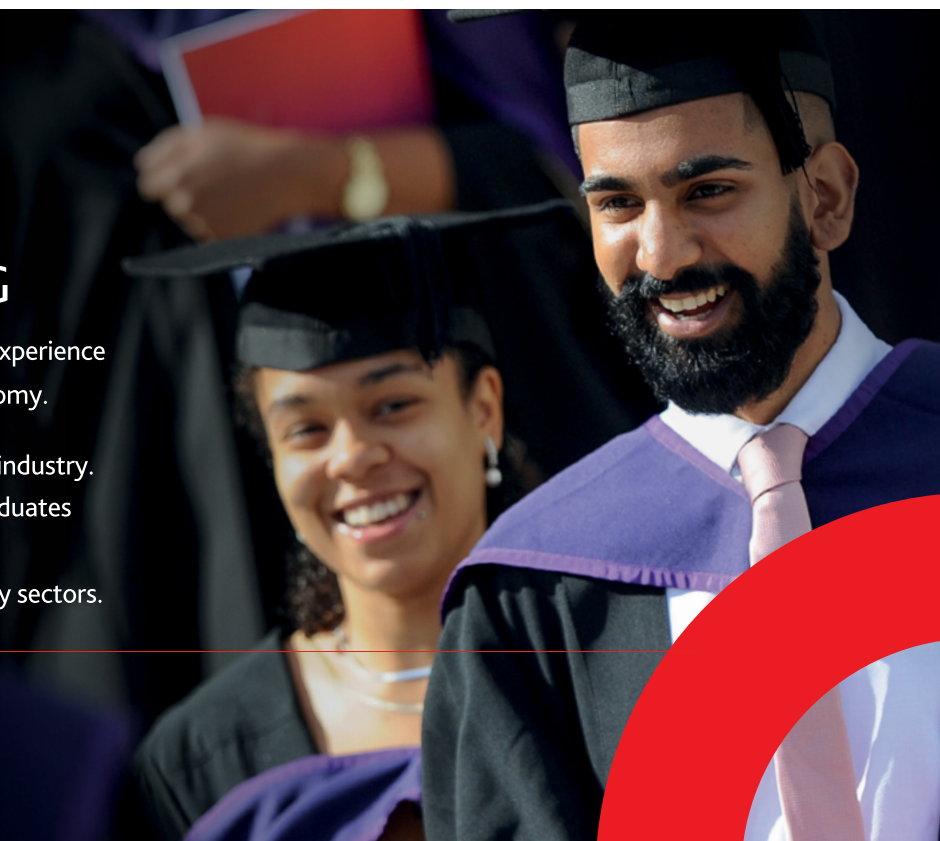
**SOLENT**  
 UNIVERSITY  
 SOUTHAMPTON

## READY FOR ANYTHING

Solent graduates have the skills, knowledge and professional experience to contribute to key Indonesian industries and grow the economy.

- Our degrees and training are delivered in collaboration with industry.
- We are recognised for developing confident, professional graduates who are work ready, world ready and future ready.
- We have an international network of successful alumni in key sectors.

Explore our industry-focused degrees  
[www.solent.ac.uk/international](http://www.solent.ac.uk/international)





**Kellys Express** is Indonesia's leading Moving and Mobility provider based in Jakarta, Bali and Surabaya. We have moved client's personal belongings all over the world and our reputation and commitment to service is first class. Whether you are a large organisation, an expat relocating or even moving locally, we can always help you. We think outside the box!

Our culture at Kellys Express is having the ability to adapt quickly to our customer needs and requirements. Since the company was formed in 2007, till now, we have always put the client first and making sure our commitment to service is first class. These are our number one goals. As a small family based company, we always aim for that personal touch with our clients. This is what makes us a leading relocation company in all of Indonesia.



**Local Moves**



**International Moves**



**Office Relocation**



**Global Mobility Services**



**Secure Storage**



**Special Products**

## WHY CHOOSE **KELLYS EXPRESS?**

At Kellys Express we know that our client deserves the best. When it comes to the services we provide, our experience allows us to give you the best door-to-door service. When you entrust us with your precious possessions, you will be sure that you have placed them in the best hands anywhere in the world.

**M.T. RAJAH**  
General Manager





# Sectoral Working Groups & Position Papers

BritCham is very pleased to be an institutional member of EuroCham. An integral part of this membership is that some of our members engage in the extensive range of EuroCham Working Groups. These were co-founded by the EU Commission.

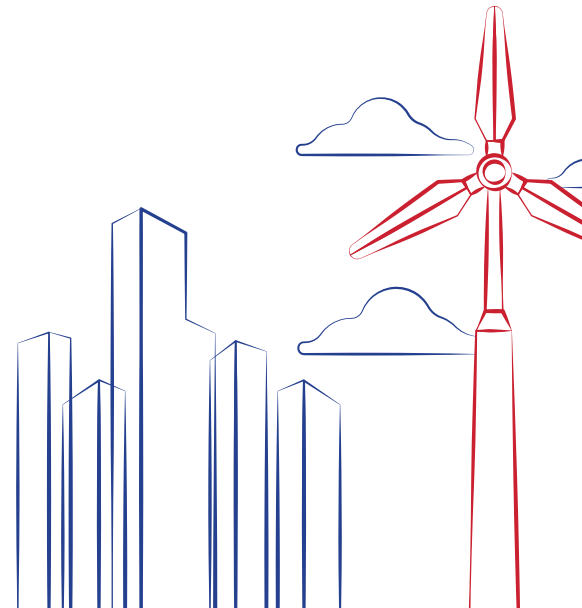
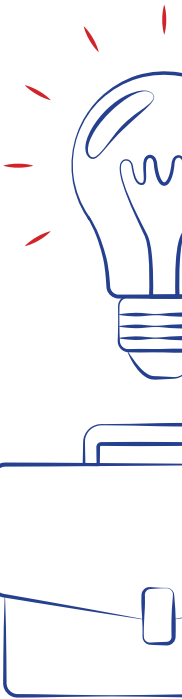
Some working groups meet regularly, others meet as something topical hits the radar. Those of our members who have already expressed an interest in participation receive notifications of meeting schedules. Each working group produces and updates positions for its sector of interest. These positions reflect the regulatory environment and constructively look at ways to improve the ease of doing business and enhancing trade.

We would sincerely like to thank EuroCham for their permission to reproduce the latest positions across a range of sectors covered by their working groups. We hope you find them useful.

*If you would like to be more actively involved, please contact: [administration@britcham.or.id](mailto:administration@britcham.or.id) who will issue an introduction to the group administrator.*

## Working Groups & Member Forums

Agriculture, Food and Beverages -  
Automotive - Chemical - Cosmetics  
- Energy - Finance, Tax & Investment  
- Human Resources - Intellectual  
Property - Import-Export Procedures -  
Pharmaceutical and Medical Technology  
- Property - Retail - Sustainable  
Development - Technology - Tobacco -  
Transport and Logistics



# Agriculture, Food and Beverage

Started in 2013, the Agriculture Food, and Beverages Working Group has continued to grow by the presence of its member companies consisting of processed food manufacturing, beverages, horticulture, and dairy. This Working Group covers broad areas of the food supply chain and aims to play a role in encouraging a constructive and proactive dialogue that is essential to develop a joint approach for achieving goals in food security, economic opportunity, as well as environmental sustainability.

In 2021, the Working Group continued to conduct its meetings online due to the pandemic. Topics that were discussed during the year included updates on the operations and mobility of industrial activities during the pandemic, regulation on SNI, carbon tax plan, as well as the plan to impose excise for sweetened bottled packaged, Halal and others related to agriculture, food and beverage sectors. The Working Group was also invited by BPOM (Indonesian Food and Drug Agency) to attend their socialisation on the standard of business licensing at the Directorate of Processed Food. On the agriculture sector, the Group sent an input letter to BKPM (Indonesian Investment Coordinating Board) regarding the Draft of President Regulation on the Capital Investment Business Fields. The Group requested that the horticulture sector be excluded from the business field that requires certain requirements to align with the spirit of the issuance of Law No. 11/2021 on Job Creation, which removed the limitation of foreign investment in the horticulture sector.

This year, the Head of the Working Group for 2019-2021, Doni Wirote (Frisian Flag), resigned from the leadership of the Working Group. As a result, the Working Group decided to choose Ruly Rachman (Frisian Flag) as the new Head.

## Head of Working Group:

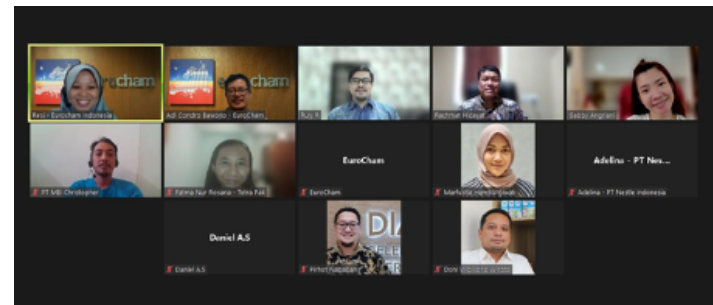
- Doni Wirote Wibisono (Frisian Flag Indonesia)
- Ruly Rachman (Frisian Flag Indonesia)

## Deputy for Agriculture:

- Laksmi Prasvita (Bayer Indonesia)

## Deputy for Beverages:

- Dendy A. Borman (DIAGEO Indonesia)



# Automotive

---

The Automotive Working Group was established in 2009 and consists of major European automotive companies operating in Indonesia. More than 20 companies are active participants across car and motorcycle manufacturers, spare parts and components producers, certification providers, and consultants.

Through advocacy activities, the Working Group regularly provides recommendations for the improvement of business and investment climate in Indonesia. The Working Group conducts a series of internal meetings as well as policy meetings with various stakeholders and policy makers. In 2021, the Automotive Working Group engaged the Ministry of Industry, the state-owned oil and gas company, PT Pertamina, as well as exchanged information with other foreign chambers and organisations.

The Automotive Working Group monitored and advocated for the development of various policies in the sector. Topics covered, among others, were investment rules for the automotive sector, implementation of Biofuel and Euro 4 emission standards, policies for Battery Electric Vehicles, fuel consumption-based taxation schemes, fiscal policies, Indonesian National Standard (SNI), import policies of various parts and components, vehicle safety, and sustainable development aspects.

---

#### Head of Working Group:

- Daniel Purba (Mercedes-Benz)
- 



# Chemical

The Chemical Working Group consists of world class chemical companies that operate and invest in Indonesia. The Working Group promotes an open and constructive dialogue with policymakers within the Indonesian Government, as well as with relevant stakeholders in the chemical sector, in order to continuously explore possibilities for further improvement. The ultimate aim is to enhance Indonesia's competitiveness as an investment destination.

The Group consists of European giants in the chemical sector that have been present in Indonesia for many decades. Currently, the Group hosts 40 companies and 3 embassies, consisting of chemical industry players and other related business interests.

Reflecting on 2020, we successfully adapted to carry out our activities online as a result of the pandemic. As the chemicals industry has been impacted by the COVID-19 pandemic, the Chemical Working Group convened a meeting to provide the government its input in response to the ongoing disruption of major global supply chain and distribution. In addition, the Group also monitored issues related to implementing regulations on Halal Product Assurance, importation and distribution of hazardous substances, registration and notification of hazardous and toxic substances related to chemical products, and the policy of selling goods electronically (e-commerce).

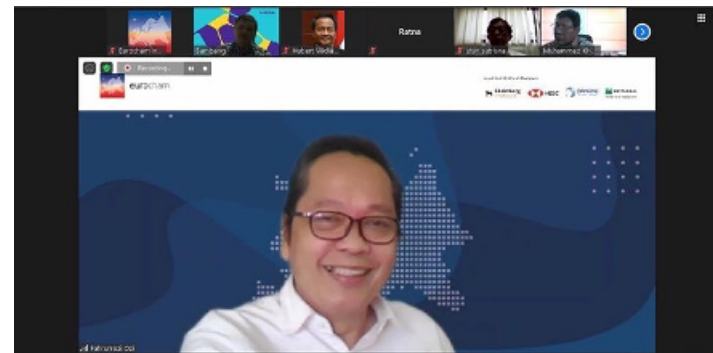
---

#### Head of Working Group:

- Erike Yanidia (Merck Indonesia)

#### Deputy of Working Group:

- Fahrurrozi (BASF Indonesia)
- 



# Cosmetics

This year, the Group continued their FGD event on the 1.4 Dioxane with L'Oreal Indonesia and invited BPOM as the participant. As a result of the event, the Group received positive feedback from BPOM that they would like to have the same kind of webinar to be conducted for other topics. The Group also continued to discuss issues such as Halal, plastic waste reduction, and several regulations from BPOM. In the beginning of the year, the Group had the privilege to meet with the Director of Standardisation of Traditional Medicines, Health Supplements, and Cosmetics of BPOM to discuss the current challenging issues facing the cosmetic industry.

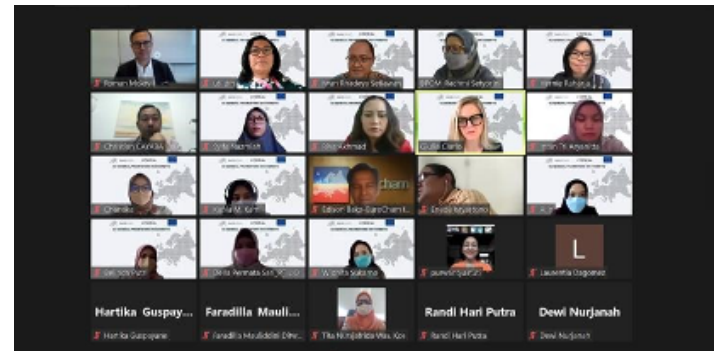
To close the year, the Group held a sharing session between the members of the Group and BPOM's representative by inviting Mr. Roman Mokry as a speaker from the European Commission to discuss the EU General Framework on Cosmetics. The session was attended by the Director of Standardisation of Traditional Medicines, Health Supplements, and Cosmetics, Representatives from the EU Delegation, members of the Working Group, as well as representatives from other Directorate of Deputy II of BPOM. During 2021, the Working Group participated in numerous public socialisation events held by BPOM and was invited to be an observer at the 33<sup>rd</sup> ASEAN Cosmetic Scientific Body (ACSB) and ASEAN Cosmetic Committee (ACC) Meeting as well as 34<sup>th</sup> ACC Meeting.

## Head of Working Group:

- Uti Daniawati Mahanani (Unilever Indonesia)

## Deputy of Working Group:

- Riva Dwitya Akhmad (L'Oreal Indonesia)



# Energy

The Energy Working Group consists of the leading European energy companies that are active in Indonesia. Our mission is to improve understanding between Indonesian and European stakeholders, as well as to engage with and assist all interested stakeholders. The Group intends to become a key dialogue partner for Indonesian government ministries as part of an overall effort to stimulate European investments within the energy sector. To date, the Energy Working Group hosts 86 companies and 13 embassies with the overall database of the Group itself expanding to more than 300 contacts listed.

Continuing its success since it was firstly held in 2016, the Energy Working Group usually organises the flagship Annual Energy Dinner. However, due to the pandemic situation, the 2020 and 2021 Energy Dinners were postponed. Despite this, the Group successfully maintained its regular monthly meetings online by engaging various speakers and stakeholders to share updates on relevant issues including renewable energy, energy efficiency, and electricity tariffs. Moreover, the Group also maintained close coordination amongst the Head and Deputies by conducting the energy dinner with Group leaders on a bi-monthly basis.

The Group also initiated the formulation of joint recommendations for renewable energy and energy efficiency among different stakeholders, and pursued further initiatives to identify how industries can support the achievement of the national renewable energy target and its energy efficiency savings target.

*Considering the diverse topics as well as the large group it represents, the Energy Working Group's leadership structure comprise of the following:*

#### **Head of Working Group:**

- Thomas Wagner (Envitec Biogas)

#### **Deputy of Working Group:**

- Eva Pitterling (TUV Nord)
- Frederic Fontan (Electricite de France)
- Nicolas van den Abeele (Engie)
- Omar Abdulkadir (PwC)

#### **Working Group Special Envoy:**

- Björn Heindrich (BayWa r.e.)
- Thomas Dreessen (Indesco)



# Finance, Tax, and Investment

The Finance, Tax & Investment Working Group was established to accommodate the concerns of members with regards to taxation and investment policy matters in general. Through a series of advocacy activities with the relevant stakeholders, the Tax, Finance, and Investment Working Group addresses cross-sectoral issues that directly affect all European companies investing in Indonesia. The Working Group promotes open and constructive dialogue, as well as routinely providing recommendations on tax, finance and investment matters to the relevant policy makers in order to further improve the business climate and the investment environment in Indonesia. The ultimate goal of these activities is to further enhance investment and trade activities for the benefit of Indonesia's economic growth.

In 2021, the Working Group conducted a series of virtual meetings with its member companies to exchange updates on various policies. The Finance, Tax, and Investment Working Group engaged various institutions in 2020, which included the Indonesia Investment Coordinating Board, the Ministry of Finance, Financial Services Authority (OJK) and the Directorate General of Tax. Topics covered included the liberalisation of investment rules through the Omnibus Law, the harmonisation of tax regulation, the economic recovery and finance outlook, Indonesian translation for contracts as well as various taxation policies. The Working Group also jointly worked together with other foreign chambers to address common taxation issues.

---

**Head of Working Group:**

- Omar Abdulkadir (PwC)

**Head of Working Group:**

- Cindy Riswanto (Ginting Reksodiputro)
- 



# Human Resources

After its change into the Working Group format in 2019, the Human Resources Working Group pursued activities aimed at becoming more active to discuss issues related to the Human Resources sector.

This year, the Government issued several implementing regulations from Law No. 11/2020 on Job Creation with some of the regulations relating to manpower. In order to get more understanding from those regulations, the Group held a series of socialisation events for Government Regulations related to manpower. Together with SSEK Legal Consultants, the Group held 4 series of events starting with the socialisation on the New Foreign Workers Regulation in Indonesia, followed by New Regulation on Definite Period Employment Agreements, Outsourcing, Working Hours, and Termination of Employment, the third series focused on New Arrangement in Calculating Wages, and the last was on Security for Laid-Off Workers. The Group also collaborated with HHP Law Firm to discuss the Omnibus Law Implementing Regulations which focused on employment issues.

Aside from conducting the meeting, the Group was also invited to give inputs on the Minister of Manpower Decree No. 228/2019 on the Job Positions Available for Foreign Workers.

## Head of Working Group:

- Paramita Dewi Wijaya (BASF)





# Intellectual Property

The Intellectual Property (IP) Working Group was established in 2006 and represents various companies and stakeholders. The Working Group focuses on crucial issues of intellectual property protection and enforcement. The Group hosts 48 companies and 7 embassies, consisting of European business players who embodied innovations in their business DNA.

The IP Working Group activities seek to promote the importance of IP protection for the business and investment environment. To promote this, the Working Group conducts a series of internal meetings as well as policy meetings with various stakeholders and policy makers. In 2021, the IP Working Group engages the House of Representatives, Ministry of Law and Human Rights, Ministry of Trade, and Ministry of Finance to jointly discuss various policy developments closely related with IP protection and enforcement. This year, the IP Working Group also organised a dialogue event jointly with the International Trademark Association by inviting relevant policy makers from the government side.

Overall in 2021, topics discussed both internally and jointly with relevant policy makers including IP Enforcement, IP Border Protection, Trademarks Bad Faith Registration, Patent and Second Medical Use, IP Protection in E-Commerce, general policy frameworks on copyright, and patent registration.

## Head of Working Group:

- Kin Wah Chow (Rouse)

## Deputy of Working Group:

- Edouard Helfand (Integrity Indonesia)



# Import-Export Procedures

The Import-Export Procedures Working Group consists of European companies investing and operating in Indonesia, including some of the world's biggest producers and manufacturers that conduct import-export activities to support their businesses. In 2021, the Working Group continued to pursue its active role in contributing to the development of policy frameworks related to import-export procedures. This was done mostly through a series of policy meetings as well as providing recommendation letters to relevant policy makers as the main stakeholders. The Working Group's activities in 2021 included various interactions with the Ministry of Finance, Ministry of Trade, Ministry of Agriculture, Ministry of Industry, LNSW, and the Coordinating Ministry for Economic Affairs.

The Working Group also regularly meets and organises virtual meetings or webinars to provide opportunities for member companies to exchange updates and develop recommendations related to various topics impacting cross border trade procedures. Overall, the activities are aimed at improving the business climate in Indonesia and enhancing Indonesia's competitiveness as an investment destination.

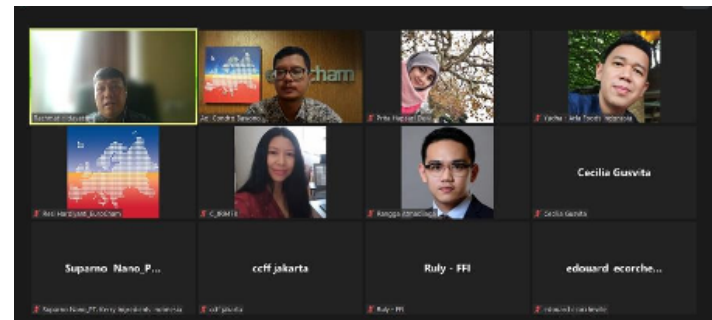
Topics covered by the Working Groups in 2021 included Market Access Opportunity, Commodity Balance, Fiscal and Non-Fiscal Stimulus, Indonesia National Standard, Post Border Supervision and Simplification of Import License, Indonesia National Single Window, and Import Provision and Policy of various products (iron and steel, textile, footwear, alcoholic beverages, dairy and its derivatives, complementary goods, goods for market test, and after-sales).

## Head of Working Group:

- Rachmat Hidayat (Danone)

## Deputy of Working Group:

- Prita Hapsari (Nestlé)



# Pharmaceutical and Medical Technology

The Working Group consists of the world's leading industry players in Pharmaceutical and Medical Technology in Indonesia. Our mission is to improve the understanding between Indonesian and European stakeholders as well as to engage with and assist all interested stakeholders. The Group intends to become a key dialogue partner for relevant Indonesian government ministries and institutions in the effort to stimulate European investments in these sectors.

The Group represents the multinational pharmaceutical and medical device companies that have been present in Indonesia for many decades. Currently, the Group consists of 150 active members from 60 companies, both from the pharmaceutical and medical device sector, as well as other supporting industries.

Since the pandemic emerged in Indonesia in early 2020, most of our activities were conducted virtually. However, the Group successfully managed to hold regular meetings on a bi-monthly basis and also organised several focus group discussions on local content for pharmaceutical products and about the healthcare cluster in Omnibus Law with speakers from related government ministries and institutions as well as joint meetings with other chambers and associations. To keep up to date and maintain close coordination among the Group leaders, the Group also organised regular coordination between the Working Group Head and Deputies and the secretariat support team.

The Working Group actively advocates issues related to the Availability and Accessibility of Pharmaceutical and Medical Devices for Indonesian Patients in the era of Universal Healthcare Coverage (Jaminan Kesehatan Nasional – JKN), closely monitors the policy development of government efforts to boost the healthcare industry through, and follows the development of Halal Law implementing regulations, import provisions related to healthcare products as well as the Patent Law implementing regulations that has a significant impact for Pharmaceutical and Medical Devices sector.

## Head of Working Group:

- Hanum Yahya (Novartis Indonesia)

## Deputy of Working Group:

- Harimurti Listianto (Anugerah Pharmindo Lestari)
- Wulaning Putri (Siemens Healthineers Indonesia)



# Property

2020 – 2021 was a difficult year for the property industry. The uncertainty created by the impact of the COVID-19 continued to create hurdles for the industry, especially for developers. With the “Work from Home” policy, many companies are moving to the new habit, creating co-working spaces that will continue to perform as they provide flexibility.

With the objective of providing members a platform for obtaining inside information about the Jakarta property market, an event-based property member forum was established in 2008. The Members Forum was initially

intended to function as a forum for exchanging practical experiences for property owners and lessees as well as addressing special points of interest towards third parties, primarily the Indonesian government. It is hoped that in future, the Forum can look at the possibility of collaborating with other Working Groups to obtain more interesting information related to the property sector.

We offer scholarships, plus our reasonable fees and the low cost of living make us great value for money.



**Nicholas Patrick** | Indonesia  
BA (Hons) Concept Art  
Vice-Chancellor's Scholar

All the things they teach me here are the things I have always wanted to learn as a concept artist. The labs here offer computers with specs higher than any place I have studied before.

**Courses available in a wide range of subjects including**  
> Computer Animation & Visual Effects > Computing & Web > Health Professions



**TEACHING EXCELLENCE FRAMEWORK**

**OVER 90 YEARS**

OF INNOVATION IN EDUCATION

**14<sup>TH</sup>**

**IN THE WORLD**  
ANIMATION CAREER REVIEW  
INTERNATIONAL ANIMATION  
SCHOOL RANKINGS 2020\*\*

TEESSIDE UNIVERSITY WAS

**RANKED 1 OF 42 UK UNIVERSITIES FOR**

OVERALL AVERAGE SATISFACTION | AVERAGE SATISFACTION WITH LEARNING | LIVING COSTS  
IN THE INTERNATIONAL STUDENT BAROMETER SURVEY 2019\*

**Find out more**  
[tees.ac.uk/international](https://tees.ac.uk/international)

**Teesside University South East Asia regional office**  
T: +603 22826622 | E: [enquiries.sea@tees.ac.uk](mailto:enquiries.sea@tees.ac.uk)

**AMBITION DELIVERED TODAY**

\*Based on the views of 854 Teesside students within a global survey response of 179,950 students. More info at [www.i-graduate.org/about-us/clients/](http://www.i-graduate.org/about-us/clients/). Verification data on request, email [info@i-graduate.org](mailto:info@i-graduate.org)  
\*\*All messages are publicly verifiable at [tees.ac.uk/source](https://tees.ac.uk/source)



# Retail

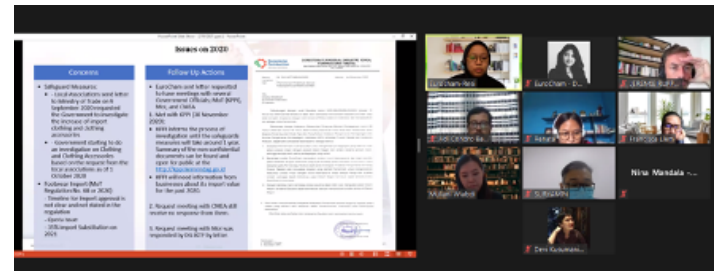
The Retail Working Group was formed to serve as a platform to consolidate the interests of European retailers operating in Indonesia by exchanging information on updates on the regulatory environment, market condition, as well as updates on the development of the industry in general. This year, retail activities in Indonesia continued to struggle due to the pandemic. At the same time, the challenges faced by the industry also continue to grow.

To start the year, the Group held meetings to discuss specific issues based on the sector, which were safeguard measures investigation, the implementation of the Minister of Trade Regulation No. 68/2020 on Import Provisions for Footwear, Electronics, and Bicycles, and the implementing regulations of Law No. 11/2020 on Job Creation.

In view of the progress as well as the business environment for this sector, whereby retail is now increasingly reliant on online platforms and is no longer associated with brick and mortar stores, the policy and regulations have also become increasingly integrated with digital and e-commerce. Therefore, the Group sometimes works together with other Working Groups like the Import-Export Procedures Working Group that caters mostly to issues faced by retail companies.

## Deputy of Working Group:

- Muliani Wiabdi (Masari Group)



# Sustainable Development

The Sustainable Development Working Group was formed in 2014 after the Sustainable Development Working Group and the Corporate Social Responsibility Working Group merged due to the similarity of their roles. The Working Group has been actively conducting meetings to provide a platform whereby businesses can share experiences regarding best practices and discuss updates on regulations related to Company Social Responsibility (CSR) and Sustainable Development.

The Group was also invited to be guest speakers at several events, namely “Webinar: “10 Years Progress and Challenges on Business and Human Rights in Private Sectors - New EU Mandatory Human Rights Due Diligence: What Are the Consequences?” held by Indonesia Global Compact Network (IGCN); “Together We Protect Marine Life #EUBeachCleanUp 2021” organised by the EU Delegation to support an ocean-activism and awareness-raising campaign; and the Future of Direct Investment for Climate Action held by BKPM. The Group also held a webinar on How Business can Build Resilience to Climate Impacts throughout Value Chains, which was an event to support the EU Climate Diplomacy Week 2021.

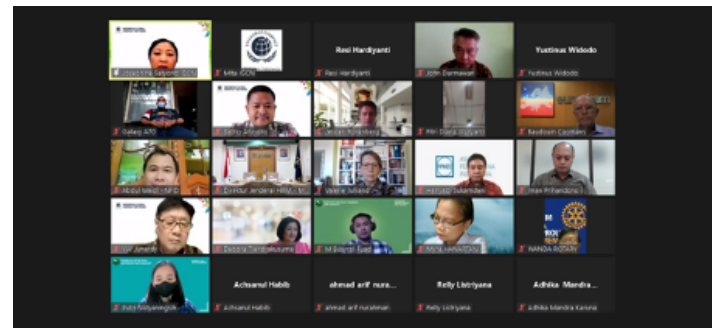
This year the third Contribution to Sustainable Development Goals (SDG) Report was drafted. The Report showcases 23 members’ contributions in implementing 17 SDGs. We hope that the Report will inspire many other companies, to follow the lead and build a stronger and more sustainable business in Indonesia.

**Head of Working Group:**

- Karyanto Wibowo (Danone Indonesia)

**Deputy Head of Working Group:**

- Baudouin Coomans (Moores Rowland Indonesia)



# Technology

The Technology Working Group was established in March 2019. The rapid development of technology that affects various aspects of business has made the topic into an increasingly relevant one today. Consisting of members involved in IT, Innovation, and R&D, this Working Group was formed to ensure active participation in support of the Government's effort to improve the regulatory framework and investment climate for technology.

The Working Group is here to support the development of Indonesia, and therefore continues to engage in a constructive dialogue and provide recommendations on the development of government policies on ICT. Its activities included a series of internal meetings and policy meetings with various stakeholders as well as policy makers. To further enhance its role and presence, as well as increase its voice of advocacy to the general public, the Working Group also actively held events that invited non-members from relevant industry players.

In 2021, the Technology Working Group engaged the Ministry of Communication and Informatics. The issues covered by the Group throughout the year included: 5G technology, personal data protection, and cybersecurity. The Working Group also jointly worked with other foreign chambers to address local content issues affecting the ICT sector.

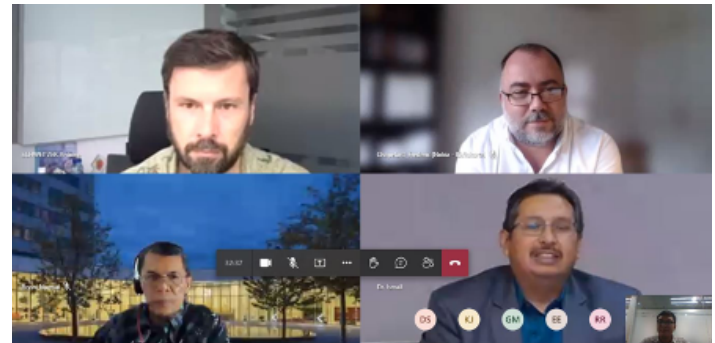
---

#### Head of Working Group:

- Karyanto Wibowo (Danone Indonesia)

#### Deputy Head of Working Group:

- Alexander Kurth (Allianz)
- 



# Tobacco

The Tobacco Working Group was established to provide a forum for tobacco industry players to work together to address and advocate a common goal and its members currently comprise of multinational tobacco companies that serve as an element of Indonesia's economy throughout the years. The members of the Tobacco Working Group regularly meet to exchange information and jointly discuss the development of the latest policy frameworks in the sector. Past activities of the Working Group included a series of meetings with relevant policy makers to jointly discuss policy frameworks in the sectors, including with the Ministry of Health and the National Agency for Food and Drug Control (BPOM).

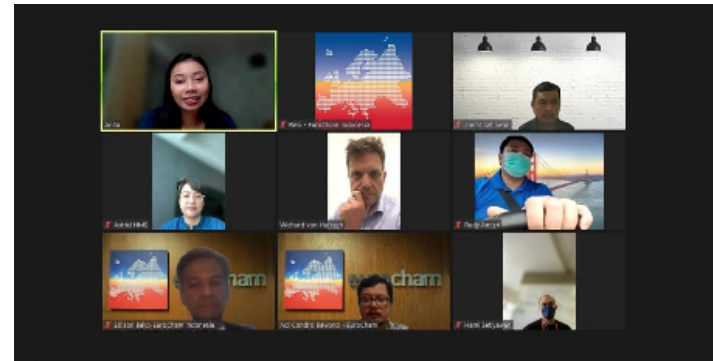
In 2021, the Tobacco Working Group continued to monitor ongoing policy developments and key topics for the sector, including required policy support for the industry, harmonisation of regulations in the tobacco industry, the tobacco industry road map, excise policy, as well as innovation development.

## Head of Working Group:

- Andre Setiawan (Japan Tobacco International)

## Deputy Head of Working Group:

- Anita Eka Lestari (HM Sampoerna)





# Transport and Logistics

The Transport and Logistics Working Group brings together key international players operating in Indonesia's transportation, logistics, freight-forwarding, express delivery services, shipping, and other related sub-sectors. The Working Group manages to establish constructive dialogue between these firms, policy makers and stakeholders to find ways of achieving mutually beneficial regulatory paths to further propel the sector. Mutual cooperation between the private sector and the government will hopefully result in a healthy and lucrative investing environment.

Advocacy activities conducted by the Working Group involve regular coordination among member companies, and formulation of recommendations to the relevant policy makers. In 2021, the Working Group, among others, interacted with the Ministry of Finance, Directorate General of Tax, and Directorate General of Customs and Excise to jointly discuss various policy developments in the sector.

In 2021, the Working Group continued advocating various key topics for the sector including: relaxation of foreign investment requirements; national logistics ecosystem; tax provisions for the sector; various customs procedures; import duty procedures under Free Trade Agreements; import of consigned goods; mandatory use of national shipping lines; road transportation safety; environmental sustainability development; and the impact of Covid-19 to ocean freight.

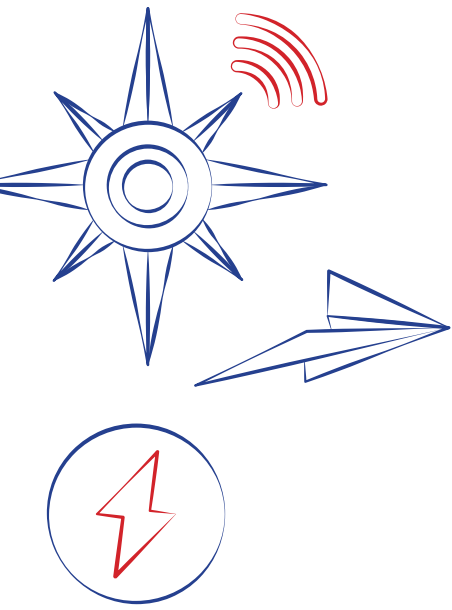
## Head of Working Group:

- Marco Pietsch (Logwin Air + Ocean)

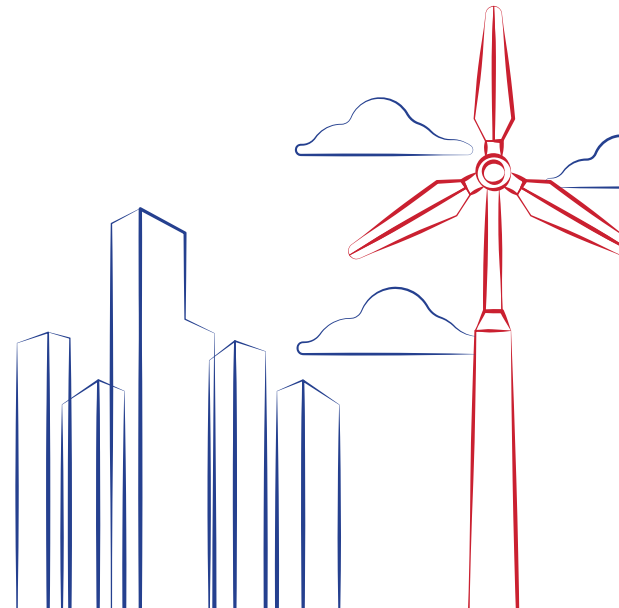
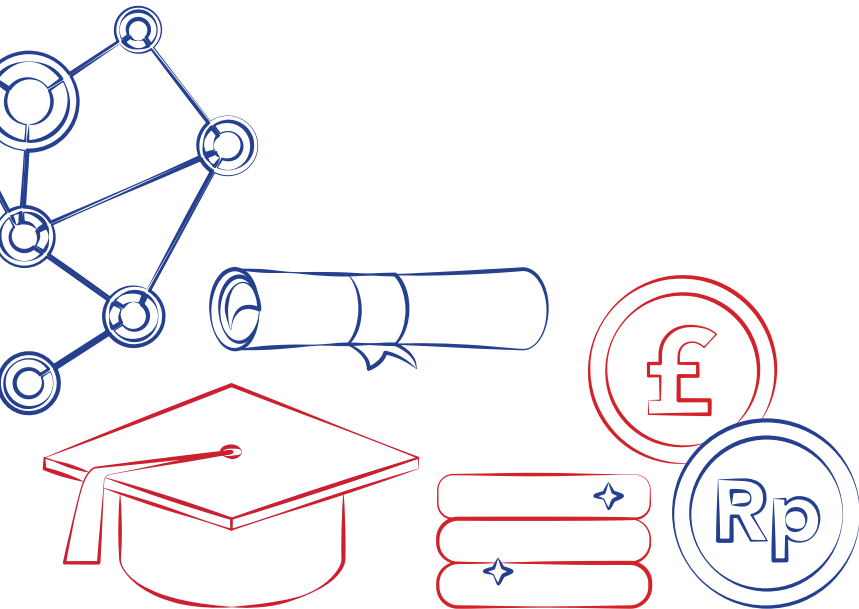
## Deputy of Working Group:

- Sugyanto Halim (DB Schenker)
- Michael Herrmann (GEODIS)
- Jop Patinggi (a. hartrodt)
- Jay Aryaputra Singgih (Bumi Laut Group)





# Events Highlights



## Event Listing - Webinar

### BritCham Indonesia Webinar

Month	Date	Time	Event	Speakers
March 2022	25 <sup>th</sup>	16.00 - 17.00	Digital and IT for a purpose and value. Everything is about to change with Artificial Intelligence!	<ul style="list-style-type: none"> <li>• Darren Winter (Director of DUCO Digital)</li> <li>• M.K Chong (Regional Brand Manager - Asia Pacific of AXELOS)</li> <li>• Abednego Samudera (Assistant Director - Michael Page)</li> </ul> <p><b>Moderator:</b></p> <ul style="list-style-type: none"> <li>• Benfano Soewito (Assistant Professor of Binus University)</li> </ul>
April 2022	12 <sup>th</sup>	15.00 - 16.15	Market Update Live Webinar with HSBC: #WhyESGMatters – Unlocking Indonesia's Renewable Energy Potential	<p><b>Opening Remarks:</b></p> <ul style="list-style-type: none"> <li>• Francois de Maricourt (President Director of PT Bank HSBC Indonesia)</li> <li>• Olly Riches (Chairman of BritCham Indonesia, Senior Managing Director Singapore, Indonesia, Philippines &amp; Page Executive SE Asia of PageGroup)</li> </ul> <p><b>Closing Remarks:</b></p> <ul style="list-style-type: none"> <li>• Eri Budiono (Commercial Banking Director of PT Bank HSBC Indonesia)</li> </ul> <p><b>Panelists:</b></p> <ul style="list-style-type: none"> <li>• Praptono Adhi Sulistomo (Coordinator for Implementation &amp; Development of Various New and Renewable Energy)</li> <li>• Diana Tang (Director Sustainable Finance of HSBC)</li> <li>• Kate Covill (CEO of Shire Oak International Indonesia)</li> </ul>

### BritCham Climate Change Member Focus Group Webinar

Month	Date	Time	Event	Speakers	Remarks
July 2021	13 <sup>th</sup>	15.00 - 16.00	BritCham Climate Change Member Focus Group Webinar: Plastic Waste Reduction Credits: An Introduction to the New Initiative	<ul style="list-style-type: none"> <li>• Emilie Devenport (Managing Consultant/ Sourcing Manager for Plastics at South Pole)</li> <li>• Maggie Lee (Plastic Program Lead at Verra)</li> </ul>	with South Pole

BritCham Human Capital and Education Member Focus Group Webinar .....

Month	Date	Time	Event	Speakers	Remarks
August 2021	18 <sup>th</sup>	16.00 - 17.30	BritCham Human Capital & Education Member Focus Group Town Hall: 10 Ways to Improve Employability in Indonesia	<ul style="list-style-type: none"> <li>• CIPS</li> <li>• Maritime Skills Commission Working</li> <li>• TOOOPLE</li> </ul>	<ul style="list-style-type: none"> <li>• Agilityship</li> <li>• BLK Don Bosco</li> <li>• DOE Intaward Indonesia</li> <li>• NOCN Group</li> <li>• Pearsons</li> <li>• Teesside University</li> </ul>
June 2022	15 <sup>th</sup>	16.00 - 17.15	BritCham Human Capital and Education Member Focus Group in Association with Michael Page Indonesia Webinar: Talent Trends 2022	<ul style="list-style-type: none"> <li>• Olly Riches (Senior Managing Director Michael Page)</li> <li>• Cecilia Kristanto (Director Michael Page Indonesia)</li> <li>• Abednego Samudera (Associate Director Michael Page Indonesia)</li> <li>• Frances Taslim (Partner Page Executive)</li> </ul> <p><b>Moderator:</b></p> <ul style="list-style-type: none"> <li>• Adrian Adshade (Marketing &amp; CX Strategy, APAC of Michael Page)</li> </ul>	



PLACEMENT OPPORTUNITIES

ALUMNI IN 153 COUNTRIES

SCHOLARSHIPS UP TO £5,000

OVER 300 CLUB AND SOCIETIES



HISTORY DATING BACK TO 1824

COMPETITIVE TUITION FEES

20, 10 OR 5-WEEK ENGLISH PRE-SESSIONALS

INVESTING £200 MILLION IN UNIVERSITY FACILITIES

★★★★★ FIVE STARS EMPLOYABILITY AND INTERNATIONALISATION QS STARS UNIVERSITY RATING

24,000 STUDENTS FROM 143 COUNTRIES

## BritCham Smart Sustainable Cities Member Focus Group Webinar .....

Month	Date	Time	Event	Speakers
September 2021	13 <sup>th</sup>	16.00 - 17.00	BritCham Smart Sustainable Cities Member Focus Group Webinar: Cities Facing Pandemic: Adapt or Collapse	<p><b>Opening remarks:</b></p> <ul style="list-style-type: none"> <li>• H. Marten A. Taha (Mayor of Gorontalo/APEKSI Vice Chairman)</li> <li>• Olly Riches (BritCham Chairman)</li> </ul> <p><b>Speakers:</b></p> <ul style="list-style-type: none"> <li>• Prof Kevin Baird (Head of Unit for Eijkman-Oxford clinical research unit)</li> <li>• Ruta Ireng Wicaksono (Expert Staff for Mayor of Tangerang City)</li> <li>• Basil Gouge (Regional Lead for Security Risk Management &amp; Business Resilience of Hill &amp; Associates)</li> </ul>
October 2021	12 <sup>th</sup>	16.00 - 17.00	BritCham Smart Sustainable Cities Member Focus Group Webinar: Sustainable Food Sourcing from Farm to Table	<p><b>Speakers:</b></p> <ul style="list-style-type: none"> <li>• Chef Zaldi (Co-Founder &amp; Academic Director at Ottimmo)</li> <li>• Atif Syed (Founder of Wootzano)</li> <li>• Pamitra Wineka (CEO &amp; Founder o Tani Hub)</li> <li>• David Farquhar (CEO of IGS)</li> </ul>
November 2021	18 <sup>th</sup>	15.00 - 16.05	BritCham Smart Sustainable Cities Member Focus Group Webinar: A Closer Look to Indonesia's Sustainable Smart Cities and EV Opportunities	<p><b>Speakers:</b></p> <ul style="list-style-type: none"> <li>• Chris Gower (CEO of Altium Group)</li> <li>• Septian Seto (Deputy of Investment and Mining Coordination to the Coordinating Minister for Maritime Affairs and Investment, Republic of Indonesia)</li> <li>• Nisan Sodani (Director Future Cities &amp; New Industries of HSBC)</li> <li>• Diana Tang (Director Sustainable Finance of HSBC)</li> </ul> <p><b>Moderator:</b></p> <ul style="list-style-type: none"> <li>• Hikmat Drajat (Executive Vice President Product and Marketing of PT PLN Persero)</li> </ul>
January 2022	27 <sup>th</sup>	16.00 - 17.00	Smart Sustainable Cities Member Focus Group Webinar Planning for Bike-friendly Cities	<p><b>Speakers:</b></p> <ul style="list-style-type: none"> <li>• Purwanto Setiadi (Volunteer of Bike2Works Indonesia)</li> <li>• Stephen Loftus (Chief Commercial Officer of Brompton)</li> <li>• Dr Amy Hochadel (Director of the Catapult's Global Business Programme)</li> <li>• Gandrie Apriandito (Senior Transport Planner of Arup)</li> </ul> <p><b>Moderator:</b></p> <ul style="list-style-type: none"> <li>• Aldi Garibaldi (Senior Associate Director of Colliers)</li> </ul>

## BritCham Professional Women's Group Webinar

Month	Date	Time	Event	Speakers	Sponsors	Remarks
July 2021	21 <sup>st</sup>	16.00 - 17.00	Professional Women's Group Webinar: How Today's Marketers are Thriving on TikTok	<ul style="list-style-type: none"> <li>• Sitaresti Astarini (Head of Business Marketing at TikTok Indonesia)</li> </ul>	Fifty Seven Promenade, Shell, SQ Res, Unilever	
August 2021	19 <sup>th</sup>	17.00 - 18.00	BritCham Professional Women's Group Webinar: International Women Leaders - How to Empower and Energise Yourself to Make a Bigger Impact	<ul style="list-style-type: none"> <li>• Dian Andyasuri (Country Chair &amp; President Director of Shell Indonesia)</li> <li>• Ivy Kamadjaja (Deputy CEO &amp; CMO of Kamadjaja Logistics)</li> <li>• Ranjana Singh (Indonesia &amp; Vietnam Country Chair of WPP)</li> </ul>	Fifty Seven Promenade, Shell, SQ Res, Unilever	joint web- inar with IWEW
September 2021	30 <sup>th</sup>	16.00 - 17.00	BritCham PWG Webinar: How to Build Your Network with Purpose	<ul style="list-style-type: none"> <li>• May Ng (CFO Yummy Corp)</li> <li>• Vandana Saxena OBE</li> </ul> <p><b>Moderators:</b></p> <ul style="list-style-type: none"> <li>• Sony Jethnani (Chairwoman of BritCham Professional Women's Group)</li> <li>• Chris Wren (Executive Director of BritCham Indonesia)</li> </ul>	Fifty Seven Promenade, Shell, SQ Res, Unilever, ICAEW	
February 2022	22 <sup>nd</sup>	16.00 - 17.00	BritCham Professional Women's Group Webinar: Future Healthcare	<ul style="list-style-type: none"> <li>• Jonathan Sudharta (Co-founder and CEO of Halodoc)</li> <li>• Varun Khanna (Senior Director Healthcare Business and Investments of Siloam Hospitals)</li> <li>• Windawati Tjahjadi (Chief Executive Officer of PT ASURANSI JIWA ASTRA (Astra Life))</li> </ul>		
March 2022	17 <sup>th</sup>	16.00 - 17.00	BritCham Professional Women's Group International Women's Day Webinar: Economic Recovery post-Covid-19 through inclusivity and equality in the workplace	<ul style="list-style-type: none"> <li>• HMA. Owen Jenkins (British Ambassador to Indonesia &amp; Timor Leste)</li> <li>• HMA. Marina Berg (Swedish Ambassador to Indonesia, Timor Leste &amp; ASEAN)</li> <li>• Hariyadi Sukamdani (Chairman of APINDO)</li> <li>• Rinawati Prihatiningsih (Cochair B20 Empower Indonesia)</li> </ul> <p><b>Moderator:</b></p> <ul style="list-style-type: none"> <li>• Julia Suryakusuma (Director of the Gender and Democracy Centre, LP3ES)</li> </ul>	BSJ, Brompton, Fullerton, Inke Maris, Prudential, Unilever	<b>Annual Partner:</b> • Siloam Hospital

BritCham Advocacy Partnership in Association with Kiroyan Partners .....

Month	Date	Time	Event	Speakers
July 2021	14 <sup>th</sup>	16.30 - 17.45	BritCham Advocacy Partnership (in association with) Kiroyan Partners: The Business Environment	<ul style="list-style-type: none"> <li>• Noke Kiroyan (Chief Consultant at Kiroyan Partners &amp; Principal of the Partnership)</li> <li>• Adi Abidin (co-commentator) Public Policy and Stakeholder Engagement Specialist at Kiroyan Partners</li> </ul> <p><b>Q&amp;A Moderator:</b></p> <ul style="list-style-type: none"> <li>• Harun Reksodiputro (Former Vice Chairman of BritCham Indonesia, Partner at Ginting &amp; Reksodiputro in association with Allen &amp; Overy)</li> </ul>
November 2021	23 <sup>rd</sup>	16.30 - 18.00	BritCham Advocacy Partnership (in association with) Kiroyan Partners: Post-COP26: What We Know and The Impact on Indonesia	<ul style="list-style-type: none"> <li>• Ainsley Mann (ASEAN Head of Business Development of Swire Pacific)</li> <li>• Chrisnawan Anditya (Director of Various of New &amp; Renewable Energy of Ministry of Energy &amp; Mineral Resources)</li> <li>• Indra Darmawan (Special Advisor to the Chairman on Macro Economics of Ministry of Investment/BKPM)</li> </ul> <p><b>Moderator:</b></p> <ul style="list-style-type: none"> <li>• Noke Kiroyan (Chief Consultant of Kiroyan Partners &amp; Principal of the Partnership)</li> </ul>



Loughborough  
University

## Marketing Information Webinar

Month	Date	Time	Event	Speakers	Remarks
July 2021	6 <sup>th</sup>	16.00 - 17.00	Marketing Information Webinar - Leaders Talk: Reimagining and Reforming Business to Succeed in New Normal	<ul style="list-style-type: none"> <li>Venkkat Ramanan FCMA,CGMA (Regional Vice President - Asia Pacific of the Association of International Certified Professional Accountants (The Association))</li> </ul>	with CIMA
September 2021	29 <sup>th</sup>	16.00 - 17.00	Marketing information Webinar with Shipper Indonesia: The Role of 4PL in Reshaping Supply Chain	<ul style="list-style-type: none"> <li>Okin R. Purba (Board of Expert at Indonesian Logistics Association)</li> <li>Ramaseshan Krishnan (SVP Commercial at Shipper.id)</li> </ul> <p><b>Moderator:</b></p> <ul style="list-style-type: none"> <li>Wilson Andrew (Senior Manager External Affairs at Shipper.id)</li> </ul>	with Shipper Indonesia
March 2022	15 <sup>th</sup>	16.00 - 17.00	Marketing Info Webinar JABABEKA: Raise Industry 4.0 in Emerging Country	<ul style="list-style-type: none"> <li>Rudy Subrata (General Manager Sales &amp; Marketing of Jababeka Industrial Estate)</li> </ul>	With Jababeka
	31 <sup>st</sup>	16.00 - 17.00	Marketing Info Webinar with Ditrolc Energy: Indonesia's Future Energy: The Growth of Commercial & Industrial Solar	<ul style="list-style-type: none"> <li>Michelle Ong (Executive Director of Ditrolc Energy)</li> <li>Victor Samuel (Executive Director in PT ATW Investasi Hijau)</li> </ul>	With Ditrolc Energi
May 2022	24 <sup>th</sup>	14.00 - 15.00	BritCham Marketing Information Webinar in Association with Micro Focus: Boosting Resilience in the Race to Digital Transformation	<ul style="list-style-type: none"> <li>Ardi Sutedja K (Chairman &amp; the Co-Founder of Indonesia Cyber Security Forum (ICSF))</li> <li>Nia Wahyu Utami (Senior Policy Analyst at Directorate of Cyber Security and Crypto Strategy &amp; Deputy of Strategy and Policy of Cyber Security and Cryptography of National Cyber and Crypto Agency (BSSN))</li> <li>Met Wisra (Micro Focus)</li> </ul> <p><b>Moderator:</b></p> <ul style="list-style-type: none"> <li>Miftahul Jannah (Country Sales, Indonesia of Micro Focus)</li> </ul>	With Micro Focus



## Event Listing - Physical Event

### BritCham Indonesia Event .....

Month	Date	Time	Event	Venue
May 2022	17 <sup>th</sup>	18.00 - end	The BritCham Business and Social Gathering	Blu Martini JW Marriott Hotel Jakarta
	20 <sup>th</sup>	17.30 - end	BritCham Awards & Recognitions leading on to BritCham "Triennial" Bash	Ballroom Mandarin Oriental Hotel Jakarta
June 2022	19 <sup>th</sup>	09.00 - 15.00	BritCham Board Strategy Meeting and Discussion with Mayor of Bogor	Balai Kota Bogor

### BritCham Climate Change Focus Group Event in Partnership with Kiroyan Partners .....

Month	Date	Time	Event	Speakers	Venue
May 2022	14 <sup>th</sup>	16.30 - end	BritCham Climate Change Focus Group Event in Partnership with Kiroyan Partners: Ahead of Carbon Tax Implementation In Indonesia: Projection, Impact, and What Business Can Expect	<ul style="list-style-type: none"> <li>• Denny Vissaro (Manager Fiscal Research of Danny Darussalam Tax Center)</li> <li>• Edwin Nugraha Putra (Executive Vice President Electricity System Planning of PT PLN)</li> <li>• Ilham, ST, MT (Analisis Kebijakan Ahli Madya Deputi Bidang Koordinasi Pengelolaan Lingkungan dan Kehutanan)</li> <li>• Rino Donosepoetro (Standard Chartered Bank Vice Chairman, ASEAN &amp; President Commissioner Indonesia)</li> </ul> <p><b>Moderator:</b></p> <ul style="list-style-type: none"> <li>• Noke Kiroyan (Chief Consultant at Kiroyan Partners &amp; Principal of the Partnership)</li> </ul>	Savyavasa Gallery

## BritCham Human Capital and Education Member Focus Group Event .....

Month	Date	Time	Event	Speakers	Venue
May 2022	17 <sup>th</sup>	16.00 - end	Human Capital and Education Member Focus Group Event: Selecting and Developing Future Leaders to Deliver A Sustainable World	<ul style="list-style-type: none"> <li>• Dara Cincinati (Managing Director of BBM Logistics &amp; Chair of Committee Member, Research and Digital-Sharia Economy, KADIN)</li> <li>• Rino Donosepoetro (Chairman of BritCham Indonesia &amp; Vice Chairman ASEAN of Standard Chartered Bank)</li> <li>• Olly Riches (Former Chairman, now Consultative Board of BritCham Indonesia and Senior Managing Director Singapore, Indonesia, Philippines &amp; Page Executive SE Asia of PageGroup)</li> <li>• Indrijati Rahayoe (Chief Human Resources Officer of Prudential Indonesia)</li> </ul> <p><b>Keynote Speakers:</b></p> <ul style="list-style-type: none"> <li>• Nadiem Makarim (Minister of Education, Culture, Research and Technology of Indonesia)</li> <li>• Bima Arya Sugiarto (Mayor of Bogor and Chairman of APEKSI)</li> </ul> <p><b>Interlocuters:</b></p> <ul style="list-style-type: none"> <li>• Dr Paul Aitken (Chairman of Human Capital and Education Member Focus Group)</li> <li>• I Made Andi Arsana (Academia, Author, Head of Office of International Affairs UGM, Education Content Creator)</li> </ul>	Ballroom JW Marriot Hotel Jakarta

## Business Services

Month	Date	Time	Event	Speakers	Venue
May 2022	19 <sup>th</sup>	10.00 - 13.00	Business Service with UWE Bristol: Agent Conference	<ul style="list-style-type: none"> <li>• Kevin Dunn (Business Development Manager of UWE Bristol)</li> <li>• Trifty Qurrota Aini (Country Manager for Indonesia of UWE Bristol)</li> <li>• Caroline Victoria Wijaya (Managing Director of PT Roswell Mitra Perkasa)</li> </ul>	Thamrin Ballroom Mandarin Oriental Hotel Jakarta
June 2022	4 <sup>th</sup>	08.30 - end	Business Service with Micro Focus: Race to Transform - Executive Insights	<ul style="list-style-type: none"> <li>• Jeffrey Neo (Managing Director of South East Asia and Korea of Micro Focus)</li> <li>• Ardi Sutedja K (Chairman &amp; the Co-Founder of Indonesia Cyber Security Forum (ICSF))</li> </ul>	Ballroom Lotus 4 Grand Mercure Kemayoran leading onto Ancol (Formula E Race)
	17 <sup>th</sup>	19.00 - 21.00	Business Service with Teesside University: Alumni Dinner		Senthong Kanan, Harum Manis Restaurant

# STUDY A WIDE RANGE OF COURSES IN ONE OF THE UK'S MOST EXCITING AND AFFORDABLE STUDENT CITIES.

- £3,000+ scholarships for international students
- 95% of students in work or further study within 15 months of graduating (Graduate Outcome Survey 2020)
- Guaranteed city centre accommodation starting from £79.99 a week
- 9th best sport department in the world (Global QS higher education ranking 2022)

## LIVERPOOL WAS VOTED 2ND BEST UK STUDENT CITY 2021\*

(\*As voted by students on studentcrowd.com)



# Event Highlights - Member Focus Group Webinar

Climate Change & Environment Member Focus Group

Human Capital & Education Member Focus Group



Smart Sustainable Cities Member Focus Group



BritCham Professional Women's Group



# Event Highlights - BritCham Indonesia Webinar

## Webinar Series

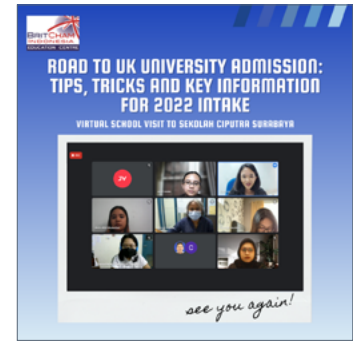
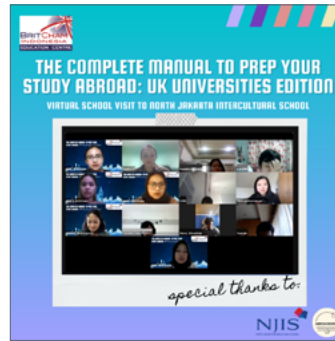


## Marketing Information Webinar

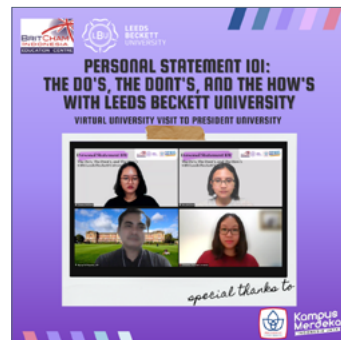


# Event Highlights - Education Centre Webinars

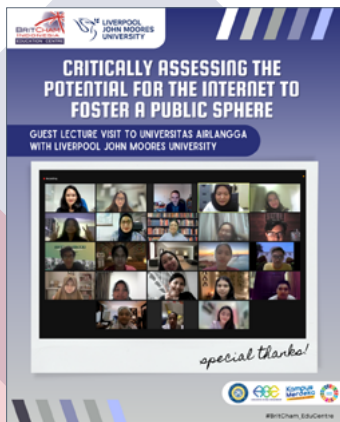
## School Visits



## University Visits



## Guest Lecture



## Webinars



# A UNIVERSITY FOR A CHANGING WORLD

In a world where nothing stays the same, we all need to change, evolve, succeed and change again.

- Join our dynamic Graduate School, with our research ranked 3\*/4\* by the Research Excellence Framework 2021
- Experience innovative new facilities like the DigiTech centre and the Health and Wellbeing Building
- Enhance your employability through links with British Telecom, AXA and the National Health Service

uos.ac.uk



## L4L Training Class: April 2022



Lancaster  
University





## The BritCham Business and Social Gathering 17<sup>th</sup> May 2022

Supported by: Think Ahead   AICPA & CIMA  DIAGEO  
INDONESIA  PRUDENTIAL



BritCham Climate Change & Environment Focus Group Event in Partnership with Kiroyan Partners:  
Ahead of Carbon Tax Implementation in Indonesia: Projection, Impact, and What Business Can Expect  
14<sup>th</sup> March 2022

Supported by:



BritCham Human Capital and Education Member Focus Group Event:  
Selecting and Developing Future Leaders to Deliver A Sustainable World  
17<sup>th</sup> May 2022

Supported by: Think Ahead    



## Business Service UWE Bristol Agent Conference 19<sup>th</sup> May 2022



## Business Service with Micro Focus: Race to Transform - Executive Insights 4<sup>th</sup> June 2022



BritCham Awards & Recognitions leading on to BritCham “Triennial” Bash .....  
 20<sup>th</sup> May 2022 at Ballroom Mandarin Oriental Jakarta

SPONSORED TABLES



AWARDS & RECOGNITIONS



SOUND PARTNER



TRIENNIAL COGNAC TOAST



COCKTAILS & AWARDS TOAST



RAFFLE PARTNERS





## Business Service with Teesside University: Alumni Dinner 17<sup>th</sup> June 2022 at Harum Manis Restaurant





## In Support of Indonesia's Talent Development Initiatives June 2022 at Executive Office of the President of the Republic of Indonesia





-  @BritCham\_ID
  -  @BritCham\_ID
  -  BritCham Indonesia
  -  BritCham Indonesia
  -  British Chamber of Commerce in Indonesia
  -  [communications@britcham.or.id](mailto:communications@britcham.or.id)
  -  [www.britcham.or.id](http://www.britcham.or.id)
- 



-  @BritCham\_ID
  -  @BritCham\_ID
  -  BritCham Indonesia
  -  BritCham Indonesia
  -  British Chamber of Commerce in Indonesia
  -  [businesscentre@britcham.or.id](mailto:businesscentre@britcham.or.id)
  -  [www.britcham.or.id](http://www.britcham.or.id)
- 




-  @britcham\_educentre
-  BritCham Education Centre
-  BritCham Education Centre
-  British Chamber of Commerce in Indonesia
-  @britcham\_educentre
-  [educentre@britcham.or.id](mailto:educentre@britcham.or.id)
-  [www.britchamedu.or.id](http://www.britchamedu.or.id)

**Just because you travel far away,  
doesn't mean we are not there.**

Keeping you safe is one of our care.



**Siloam**  **Hospitals**

 Ambulance  
1-500-911

 Appointment  
1-500-181

[www.siloamhospitals.com](http://www.siloamhospitals.com)

# Digital automation for invoice reconciliation

Digital Accounts Receivables Tool (DART) enables you to connect with your customer online. Automate and speed up settlement and reconciliation of invoices.



Issued by PT Bank HSBC Indonesia which is licensed and supervised by Financial Services Authority (OJK).

