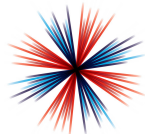
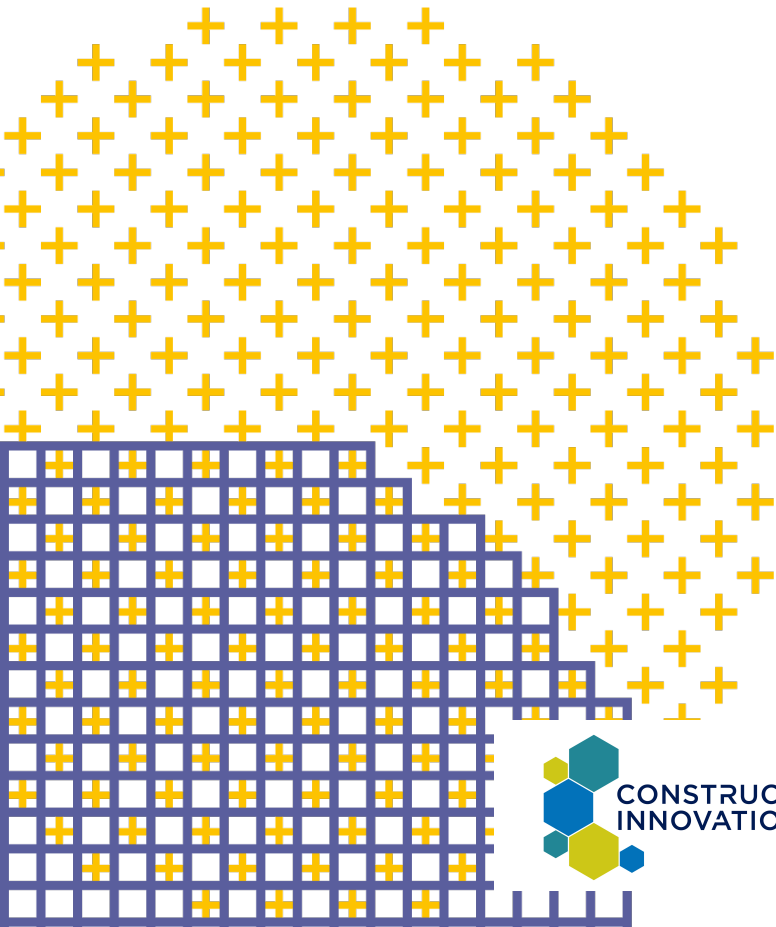




NATIONAL DIGITAL TWIN PROGRAMME

An Introduction to the Information
Management Framework for the National
Digital Twin

Dr Matthew West OBE
Technical Lead – UK National Digital Twin
programme



**INDUSTRIAL
STRATEGY**

UK Research
and Innovation



Department for
Business, Energy
& Industrial Strategy

The National Digital Twin Programme

Data for the public good
recommendations



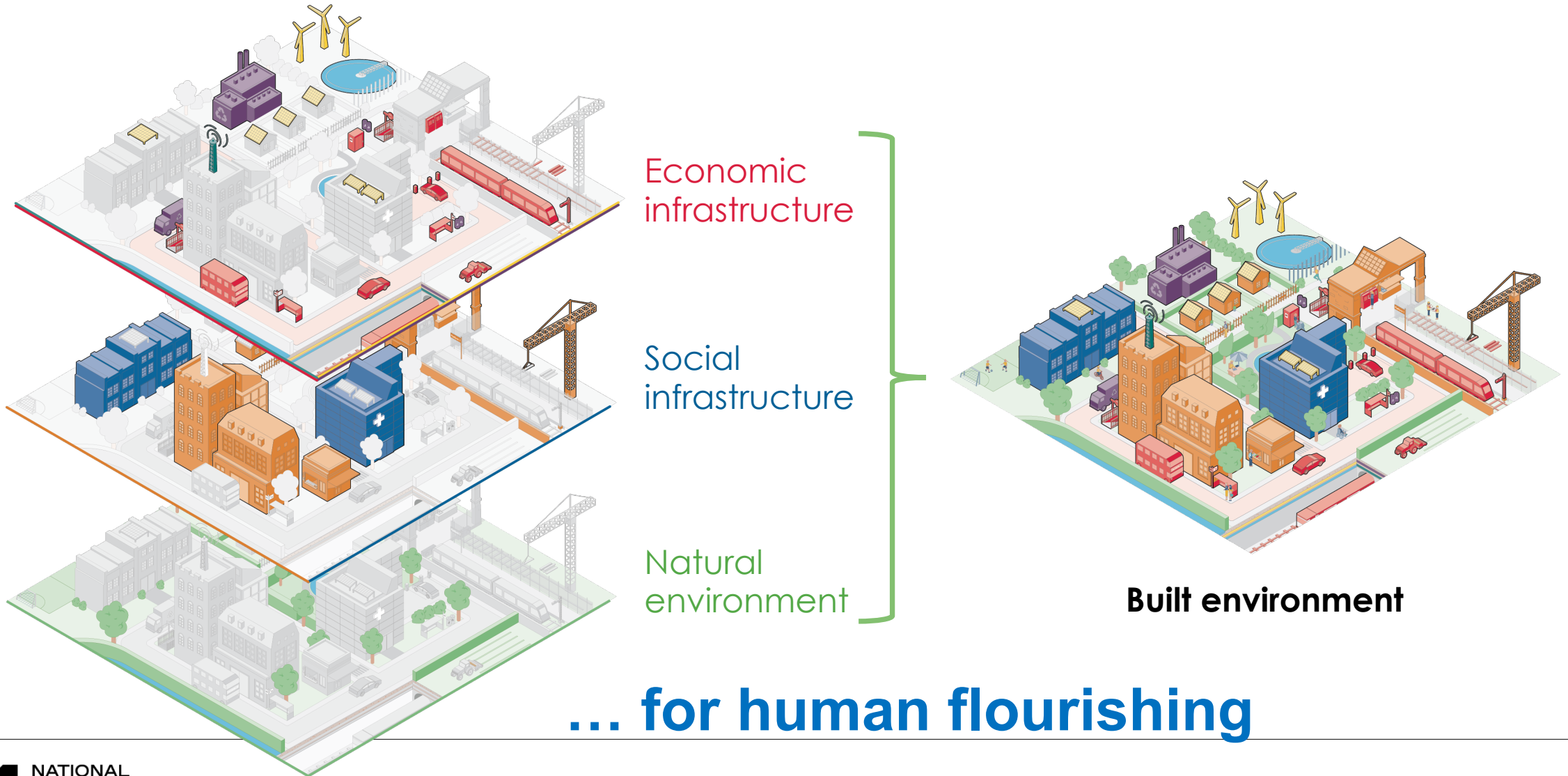
The National Digital Twin Programme

- Is led by the **Centre for Digital Built Britain**, with the mission of:
 - **delivering an Information Management Framework**, enabling secure data sharing and effective information management
 - **enabling the National Digital Twin**, an ecosystem of connected digital twins that will deliver better outcomes from our built environment
 - **aligning** industry, academia and Government on this agenda.

2017

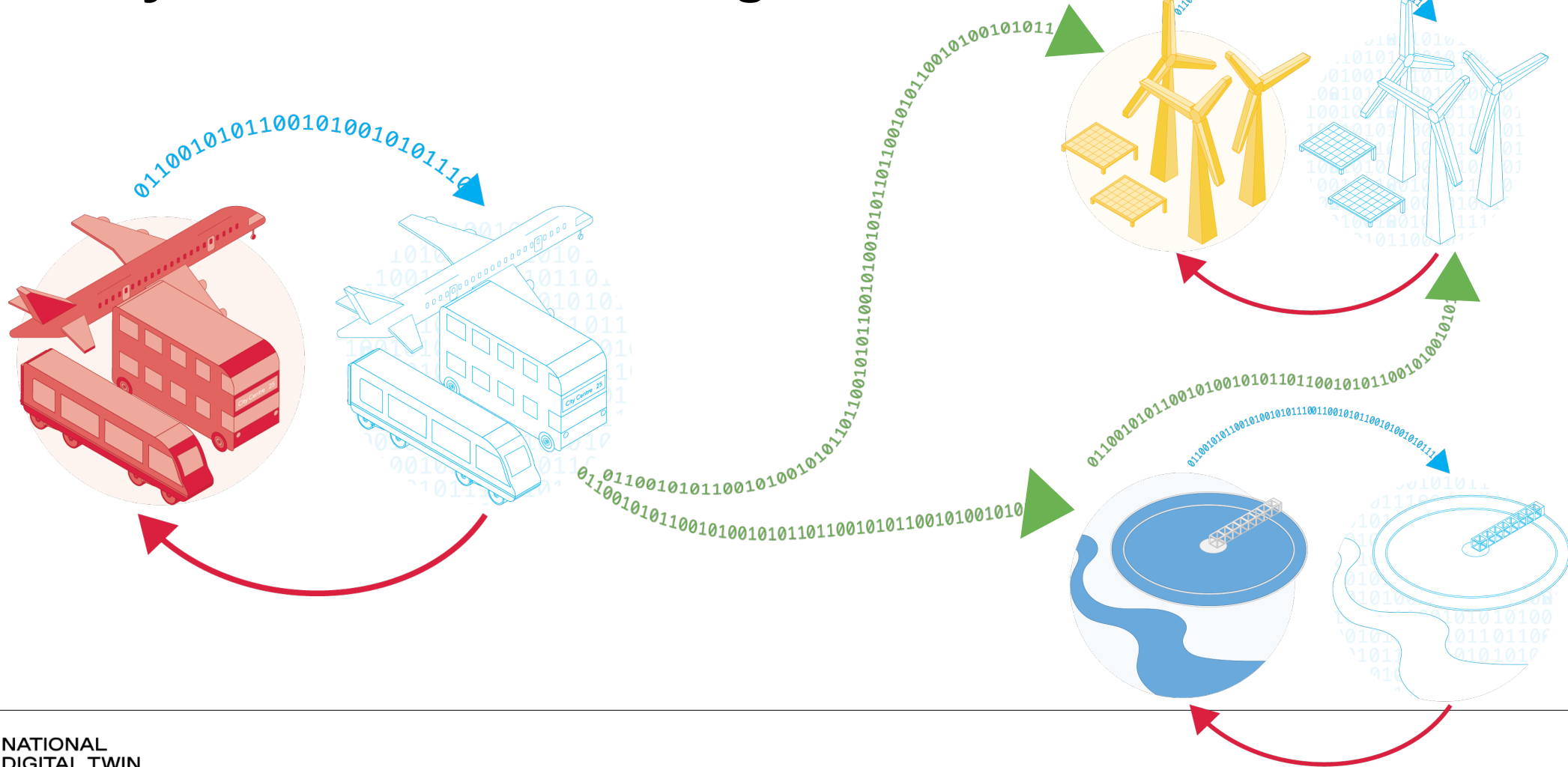


The Built Environment: A system of systems ...



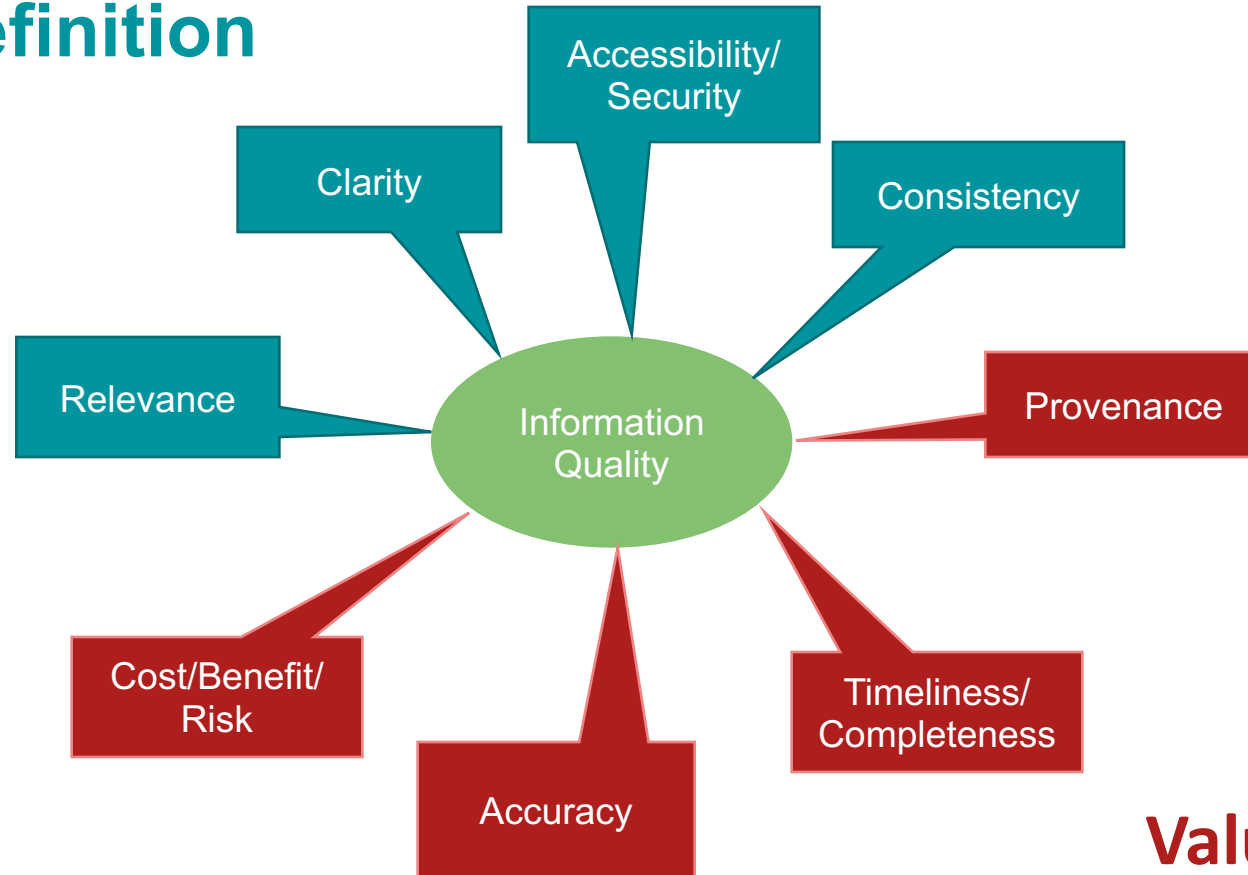
The National Digital Twin

An ecosystem of connected digital twins



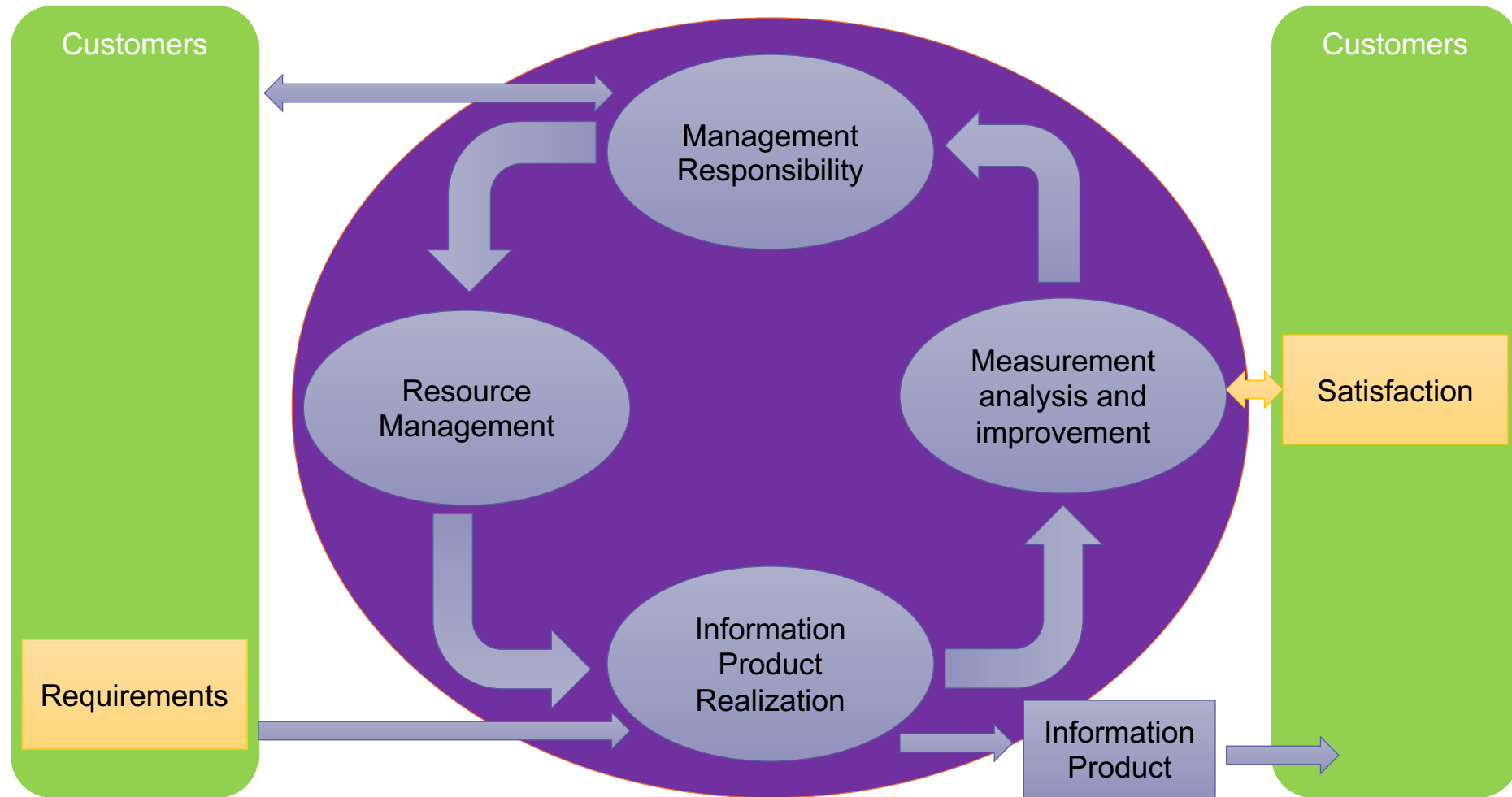
Critical Properties of Information

Definition

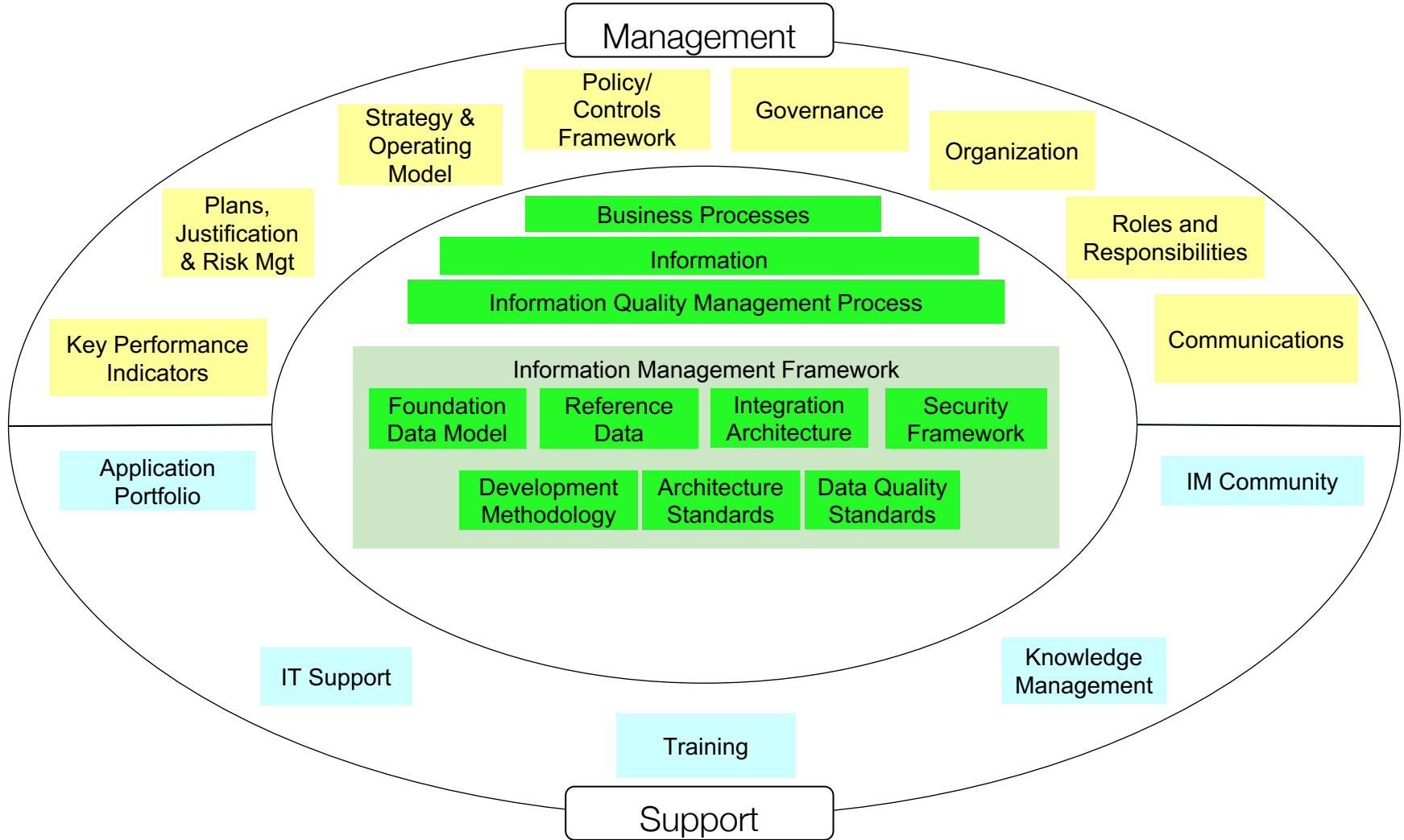


Values

Process Based Quality Management System (ISO 9001)



Information Management Landscape



The pathway towards an Information Management Framework

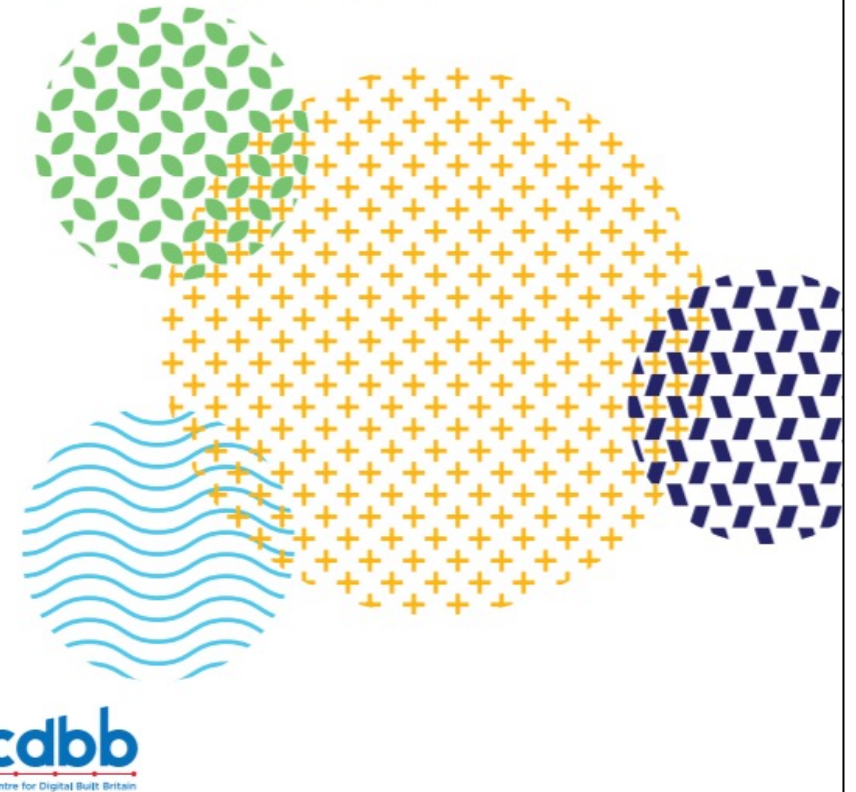
<https://www.cdbb.cam.ac.uk/news/pathway-towards-IMF>

The technical core of the Information Management Framework is

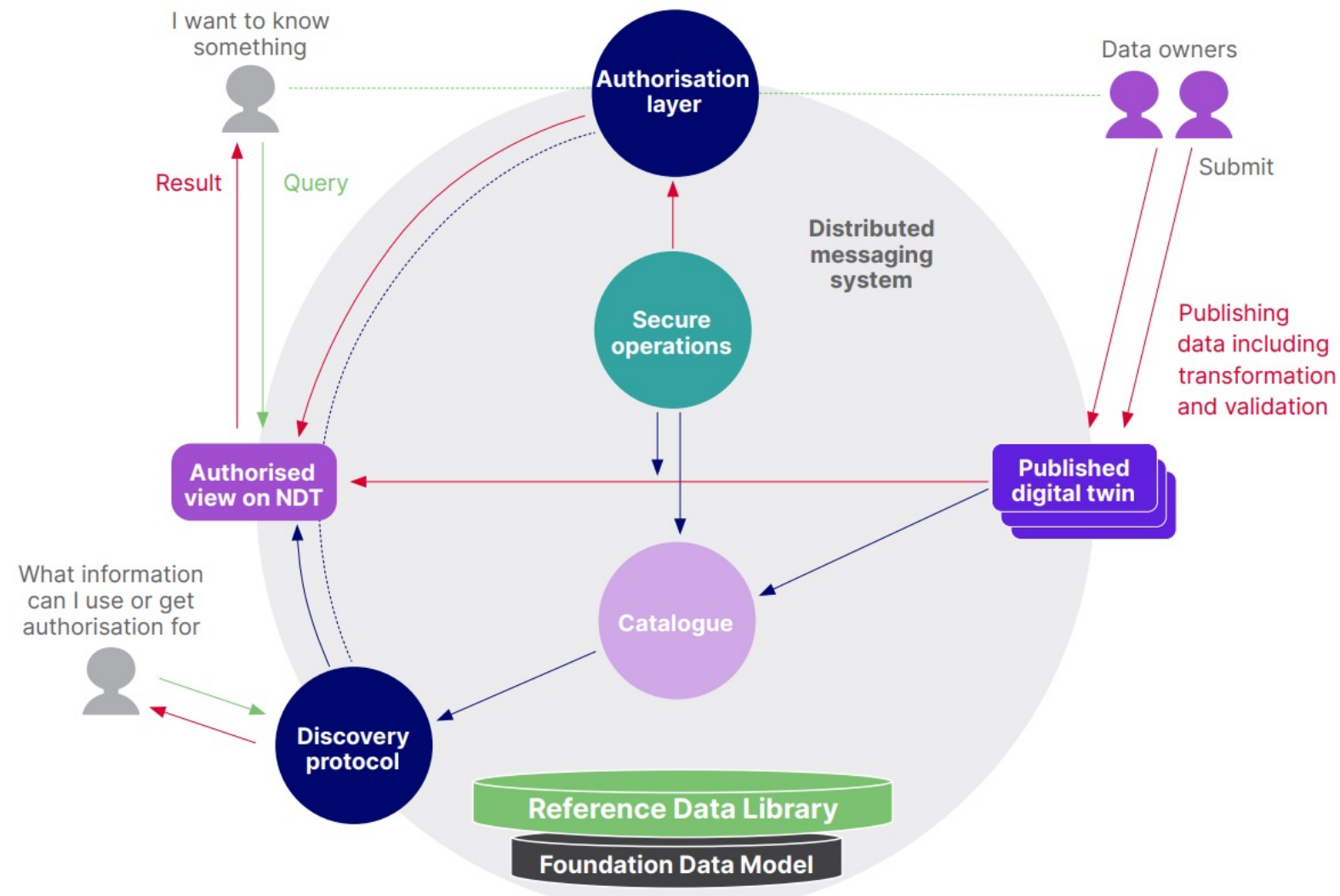
1. **Foundation Data Model** – A high level definition of the structure and meaning of data to enable the consistent sharing of data across Digital Twins and the ecosystems they support.
2. **Reference Data Library** – the particular set of classes and the properties we will want to use to describe our digital twins
3. **Integration Architecture** – the protocols that will enable the managed sharing of data

The pathway towards an Information Management Framework

A 'Commons' for Digital Built Britain



A National Digital Twin enabled by the IMF



Thank you